

Building Better Beef



Final Answer



New Day 454



Mainline



Protege'

Spring Valley

**22nd Annual
Performance Bull Sale
Wednesday, March 7, 2012 1 p.m.
Held At Sale Facility at the Ranch
near Agra, KS (map on pg. 47)**

50+ Bulls suitable for Heifers.

**Genetics second to none, backed
by one of the best guarantees
you'll find anywhere (See pg 3)**

REFERENCE SIREs

FINAL ANSWER.....	19 Sons
MAINLINE.....	14 Sons
PROTEGE'.....	12 Sons
NEW DAY 454.....	9 Sons
IRONSTONE.....	9 Sons
HOOVER DAM.....	8 Sons
WAR PARTY.....	7 Sons

Also sons of Shear Force, Program,
Predominant and Contrast

SALE broadcast on the Internet and
Bulls videoed by DV Auction

*Selling 100 Angus &
A+PLUS Balancer Bulls*
www.springvalleyfarm.com

Give us a chance to earn your business



Spring Valley Building Better Beef



Dear Beef Producers:

Lori, Brice, and I want to welcome you to our 22nd annual sale!

For those of you that have allowed us to provide you with seedstock for your operation, we want to say thank you! If you are considering purchasing here at Spring Valley for the first time, buy with the confidence that you are getting top quality combined with a commitment from us to stand behind what we sell.

We are committed to providing you with the best genetics in the Angus and Gelbvieh breeds combined with the extra service you deserve. For example, we have one of the best guarantees you will find (see page 3). Also, we do extras like freezebranding. It's another trip thru the chute for the bulls but, it gives our customers an excellent visible ID on their purchase. Other services we provide include carcass scanning, breeding soundness evaluations and delivery (also see pg 3).

The bulls are a quiet, uniform, good doing set made up of many outstanding individuals in 10+ sire groups. They should give you the genetic diversity you need to make selections that fit your operation.

Before sale day, the bulls are located just west of the sale site. Sale day, the bulls will be penned in smaller groups at the sale facility for your viewing convenience. Come by and see the bulls anytime.

If you have a question or need more information, please contact us. We appreciate your interest.

Sincerely,

Lynn *Lori* *Brice*

****Go to PAGE 46 for Lynn's Musings**

****A Supplement sheet will be available online and on sale day with carcass, scrotal and other updated information.**



Spring Valley is a USPB Qualified Seedstock Supplier and is a member of the Gelbvieh Profit Partners





22nd Annual Performance Bull Sale



**WEDNESDAY, MARCH 7, 2012
1:00 P.M.**

At the ranch 1 mile south of US Hwy 36 near Agra, KS
(SEE MAP AT THE BACK OF THIS CATALOG)

Selling: 100 Angus and A+PLUSBalancer Bulls

All bulls selling are AM, NH and CA Free (READ page 5)

Auctioneer:

James M. Birdwell
(H) 580-549-6636 (C) 580-695-2352

Livestock Press Representatives:

Matt Caldwell, *American Angus Assoc.*.....913-755-1105
Guy Peeverly, *High Plains Journal*.....785-456-9911
Andrew Sylvester, *Kansas Stockman*.....785-273-5115

Hotels:

Cottonwood Inn.....800-466-7332
Mark V Hotel.....800-219-3149

Transportation:

Commuter flights fly into Hays, KS and private planes can be flown into Phillipsburg.

Herd Health:

All bulls have undergone a complete Breeding Soundness Examination following the latest guidelines of the Society for Theriogenology. These animals were evaluated for visual and structural soundness. External and internal reproductive organs were palpated for anatomical correctness. Scrotal circumferences were measured and semen was collected using electro-ejaculation. Semen was evaluated for morphology and motility. All animals offered for sale today have been classified as Satisfactory Potential Breeders.

In regards to health status and bio-security measures; Modified live BVD, PI3, IBR & BRSV vaccines are used exclusively in this herd. These bulls have had at least three vaccinations with these viral vaccines along with two 7-way Black-leg vaccines. During the Breeding Soundness Exams all bulls were vaccinated for Vibrio (Camphylobacter) and 5-way Lepto bacterin.

Kansas is now classified as a Brucellosis Free State. All animals are ready for interstate transport. If you are moving animals out of state, make sure to stop by and pick up your Health Papers. If bulls are to be delivered at a later date, Health Papers will accompany their shipment.

Vincent Traffas DVM

Sale Book Supplement & Announcements:

A supplemental sheet will be available sale day with updated information. This sheet or any announcements from the sale book will take precedence over the sale book. We will post updates as soon as possible on our website. Carcass scans done Feb. 7th and BSE done Feb. 21.

Delivery:

Free delivery within 250 miles. If you haul your own the day of the sale or pick up within a week of the sale, we will deduct \$70 per bull from your purchase price. Bulls can be taken care of here at our ranch free of charge up to April 10th. We will start delivering bulls around the 1st of April unless you need them sooner.

Guarantee:

All bulls are guaranteed against injury or death for the first breeding season. If a replacement bull is not available, credit will be given at the next year's sale.

Liability:

Neither the sale host, the sale management, or the auctioneer are liable for any accidents which may occur.

Meal:

A complimentary lunch will be served.

Sale Day Phone: 785-638-2857

Extra Lines: 785-476-5345 or 476-6096

Please bring this book with you to the sale!
Information for online bidding located on the next page of this catalog.

Revenue Sharing:

Semen interest policy on Page 43

Volume Discount:

\$100 Discount off third bull purchased and \$100 off each additional bull.

BULLS ARE NOT CREEP FED. The weaning weights reflect the productivity of their dams.



This sale will be broadcast live on the internet.

DVAuction
Broadcasting Real-Time Auctions
Real time bidding & proxy bidding available.

If you are unable to attend the sale for any reason, internet bidding is available via the DVAuction website. We ask that internet buyers create an account and request a buyer number by the day before the sale. If you choose to use this service, please visit our sale online at <http://www.dvauction.com/>

Tami McIntosh
DVAuction e-mail address. tmcintosh@dvauction.com
308-870-3661

Buyers who would like to bid via the internet are asked to register with DV Auction by the day before the sale.



Again this year, we will be using DV Auction's Video Sale in the auction ring using three 50" LED Flatscreen TV's with a video of each bull shown as that lot sells. A video of each bull may be seen at www.springvalleyfarms.com and on the dvauction website prior to sale day. This video will be shown during the auction.

The bulls will not go through the sale ring on sale day.

As usual, bulls will be displayed in pens by sire groups near the sale facility on sale day and at the ranch prior to sale day. We encourage you to come early and view the bulls in their pens. This setup will be more convenient for our sale facility, less stressful on the bulls, and we believe it is a better way for you to see the bulls. Bidding will be done to the auctioneer and ring men as usual as well as through the internet if you're unable to attend.

We provide our customers with a first breeding season guarantee against injury and death (read guarantee on page 3). If you are not satisfied with your purchase, please contact us, we will take care of it to the best of our ability.



This is IMPORTANT!!!

All bulls selling are AM, NH and CA free.

This statement means that the bulls selling are free from the genetic defects found in certain popular bloodlines a couple years ago in the Angus breed. The bulls are free either because of a clean pedigree (meaning no carriers) or their ancestors have been tested free or the bull himself has been tested free.

The testing is done using a simple blood test. A few drops are put on a card and sent to a lab. We feel, as seedstock producers, it is one of our responsibilities that our bulls are free from these defects that could be passed on to your herd. Not all seedstock producers think this way. For example, we purchased a new BALANCER (not ANGUS) herdsire last spring, assuming the breeder we purchased him from had tested his sale bulls that were possible carriers. We found out from the Gelbvieh Assoc. after we had bred the bull to several cows that he had NOT been tested and is a possible carrier because his sire has carriers in his pedigree a couple generations back which we did not see by looking at the pedigree in catalog.

Don't assume like we did. If they don't state the cattle are AM, NH and CA free, they may have not been tested. There's no excuse for this with today's simple testing technology.



Spring Valley Building Better Beef



Email from a satisfied customer

Got the bulls home and dumped them out. Got them together and they look like two peas in a pod. Awesome bulls! The reason for me sending you a note is I took Sherry over tonight to show her the bulls and they were at the far end of the pen and I hollered at them and here they come. She wants to know what kind of treats you and Lori feed them so she can get some (she is serious LOL). Had a lot of fun yesterday at your sale. Keep up the good work!!

--Jack and Sherry Gager



SPECIAL DRAWING SALE DAY

We will hold a drawing on sale day before the auction begins for two \$300 certificates that will be good during the auction on a bull that you are the winning bidder on. You have to be registered to bid and be at the auction to win.

VOLUME DISCOUNT

\$100 Discount off third bull purchased and \$100 off each additional bull.



Angus Reference Sire

SAV FINAL ANSWER 0035



GDAR Traveler 71 #
SITZ TRAVELER 8180 #
 Sitz Everelda Entense 1137

Traveler 1148 GDAR #
 GDAR Miss Blackcap 567
 GDAR Rainmaker 340 #
 Sitz Everelda Entense 2335

Bon View Bando 598 #
SAV EMULOUS 8145
 SAV Sky Emulous 2124

Tehama Bando 155 #
 Bon View Dora 56 #
 Ellanin Sky Diver #
 Tail N 0383

ANGUS EPDs					Carcass EPDs		
CED	BW	WW	YW	Milk	MB	REA	FT
12	-1.0	61	105	25	+43	+38	+044

\$Values

\$W	\$F	\$G	\$B
+57.20	+42.27	+24.92	+55.21

At 12 years of age, Final Answer's popularity is reaching new levels due to acceptance by both the commercial and registered markets. He sires consistent low birth weights. His daughters are remarkable producers with excellent udder structure and they are moderate framed and easy fleshing. He also is very good on \$EN at +8.69.

ANGUS -- FINAL ANSWER Sons

1

SVF ANSWER Y34

Angus Reg. #: 17094400
 January 24, 2011 Tattoo: Y34



SIRE: SAV FINAL ANSWER 0035

D Connealy 5398 4108
A SVF MS C5398 4108 W281
 M SVF Ms Objective R83

Connealy Danny 5398
 Poppy of Conanga 763
 SS Objective T510 0T26 #
 Ms Bon View ND 133K

\$Wean	\$Fdot	\$Grid	\$Beef
+34.26	+45.51	+30.08	+63.48

BW	77
Adj WW	796
Adj YW	1259

EPDs					Carcass EPDs		
CED	BW	WW	YW	Milk	MBL	RE	FT
7	1.3	64	109	29	.42	.49	.006

★Recommended for heifers or cows

2

SVF ANSWER Y31

Angus Reg. #: 17094394
 January 24, 2011 Tattoo: Y31



SIRE: SAV FINAL ANSWER 0035

D Connealy 5398 4108
A SVF MS C5398 4108 W417
 M SVF Ms Future Direction R199

Connealy Danny 5398
 Poppy of Conanga 763
 KM Future Direction 1403
 SVF Bon Design 77M

\$Wean	\$Fdot	\$Grid	\$Beef
+34.40	+39.33	+29.89	+65.93

BW	73
Adj WW	755
Adj YW	1294

EPDs					Carcass EPDs		
CED	BW	WW	YW	Milk	MBL	RE	FT
8	0.8	60	102	30	.47	.61	.030

★Recommended for heifers or cows

Two outstanding herdsire prospects



Lot 1



Lot 2

3

SVF ANSWER Y47

Angus Reg. #: 17094402
January 25, 2011 Tattoo: Y47



SIRE: SAV FINAL ANSWER 0035

D	Mytty In Focus #	SAF Focus of ER #
A	MISSION ERICA 455A239654	Mytty Countess 906
M	Mission Erica 455 A23 #	Summitcrest High Prime 0H29#
		Mission Erica 4303 #

\$Wean	\$Fdlot	\$Grid	\$Beef
+31.61	+30.10	+35.06	+64.87

BW	79
Adj WW	697
Adj YW	1175

EPDs					Carcass EPDs		
CED	BW	WW	YW	Milk	MBL	RE	FT
5	2.4	56	92	26	.78	.21	.021



Lot 3

- ★Recommended for heifers or cows
- ★Final Answer x In Focus almost always works.

SPRING VALLEY COW HERD

Our cows are handled much like the commercial cows in our area. Pasture from May to November, stocks, either milo or corn, thru January then they are taken to our calving pasture the first of February down along the Solomon River, 10 miles from our house. There, they are fed ground hay (cane, prairie hay, alfalfa) with some silage. We have calved down by the river for many years. Other than when we have a very bad winter storm, the cows are checked twice a day. Being that far from the cows calving has taught us over the years to be very selective which bulls we use for such traits as calving ease, udder quality, and disposition.



BUILDING BETTER BEEF

2007 thru 2011 Feeding Results at Spring Valley

We have fed our own genetics and ultrasounded for 17 years.

Our results in 2007 include Angus heifers not kept for replacements graded 100% choice or better...26% Prime and 52% CAB. Angus steers that were banded in late November graded 96% Choice or better and 56% CAB.

In 2008, steers and heifers through USPB graded 95% Choice or better; 15% Prime, and 54% CAB.

Profit/head \$107.25.

In 2009, 189 steers and heifers through USPB graded 95% Choice or better; 13.5% Prime, and 58% CAB.

2010 results on 198 head of banded bulls and heifers through USPB graded 94% Choice or better, 13% Prime and 47% CAB.

In 2011, 123 head of banded bulls through USPB graded 98% Choice or better and 56% CAB.

PREDICTABLE RESULTS TIME AFTER TIME

4**SVF ANSWER Y224**Angus Reg. #: 17094398
February 14, 2011 Tattoo: Y224**SIRE: SAV FINAL ANSWER 0035**

D	Connealy 5398 4108	Connealy Danny 5398
A	SVF MS C5398 4108 W331	Poppy of Conanga 763
M	SVF Bon Design 124M	Bon View New Design 878 # Ms Scotch 9440 127G

\$Wean	\$Fdlot	\$Grid	\$Beef	BW	75
+34.45	+40.96	+21.87	+58.76	Adj WW	783
				Adj YW	1285

EPDs					Carcass EPDs		
CED	BW	WW	YW	Milk	MBL	RE	FT
3	2.0	64	105	29	.33	.40	.028



Lot 4

5**SVF ANSWER Y63**Angus Reg. #: 17094396
January 28, 2011 Tattoo: Y63**SIRE: SAV FINAL ANSWER 0035**

D	DS Lead On Design 6307	Connealy Lead On #
A	SVF MS LOS W343	DS Miss Blackcap 3175 #
M	SVF Ms Extra 93P	Nichols Extra H6 # Ms Easy Fortune 113K

\$Wean	\$Fdlot	\$Grid	\$Beef	BW	73
+30.33	+41.07	+25.58	+58.56	Adj WW	683
				Adj YW	1277

EPDs					Carcass EPDs		
CED	BW	WW	YW	Milk	MBL	RE	FT
8	1.0	56	102	26	.36	.43	.019

★Recommended for heifers or cows

7**SVF ANSWER Y202**Angus Reg. #: 17094423
February 12, 2011 Tattoo: Y202**SIRE: SAV FINAL ANSWER 0035**

D	Bon View New Design 1407 #	B/R New Design 036 #
A	SVF MS DESIGN 89P	Bon View Pride 664
M	Ms Frontline 95K	Connealy Frontline # SVF Ms Dividend 101E

\$Wean	\$Fdlot	\$Grid	\$Beef	BW	67
+32.54	+28.73	+23.10	+41.47	Adj WW	653
				Adj YW	1167

EPDs					Carcass EPDs		
CED	BW	WW	YW	Milk	MBL	RE	FT
13	-1.5	49	88	26	.31	.21	.021

★Recommended for heifers or cows.

★Outstanding heifer bull.

6**SVF ANSWER Y234**Angus Reg. #: 17094404
February 16, 2011 Tattoo: Y234**SIRE: SAV FINAL ANSWER 0035**

D	SCC New Design Ext 974	B/R New Design 036 #
A	SVF MS 974 T299	SCC Queen Ext 405
M	SVF Ms Design 50P	SCC New Design Ext 974 Ms KS 141G

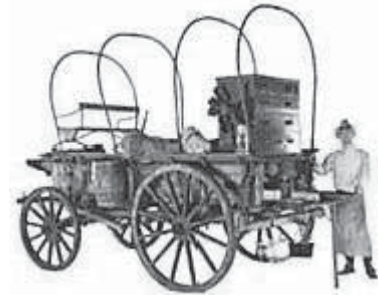
\$Wean	\$Fdlot	\$Grid	\$Beef	BW	86
+29.40	+31.76	+22.83	+55.37	Adj WW	666
				Adj YW	1221

EPDs					Carcass EPDs		
CED	BW	WW	YW	Milk	MBL	RE	FT
6	1.2	52	92	20	.27	.47	.016

★Recommended for heifers or cows



Lot 7



Come join us for the meal held before the sale begins

Final Answer has produced an excellent set of calving ease efficient performance bulls for us this year.

9 SVF ANSWER Y140

Angus Reg. #: 17094407
February 7, 2011 Tattoo: Y140



SIRE: SAV FINAL ANSWER 0035

D	KM Future Direction 43	CA Future Direction 5321 #
A	SVF MS FUTURE DIR R201	KM Barb 551
M	SVF KMD 280M	KM New Design 1060
		SVF Ms Dividend 164F

\$Wean	\$Fdlot	\$Grid	\$Beef	BW	65
+32.18	+29.79	+29.62	+56.68	Adj WW	653
				Adj YW	1184

EPDs					Carcass EPDs		
CED	BW	WW	YW	Milk	MBL	RE	FT
13	-1.9	49	89	24	.53	.28	.026

★Calving ease deluxe



Lot 9

10 SVF FINAL ANSWER Y601

Angus Reg. #: 17140464
February 2, 2011 Tattoo: Y601



SIRE: SAV FINAL ANSWER 0035

D	TK Gateway	Connealy Deep Canyon 454 #
A	TK EDELLA T617	TK Ann 317
M	TK Edella P352	Thomas Precision E161 1053
		TK Edella 601

\$Wean	\$Fdlot	\$Grid	\$Beef	BW	60
+30.72	+34.35	+25.67	+56.10	Adj WW	636
				Adj YW	1209

EPDs					Carcass EPDs		
CED	BW	WW	YW	Milk	MBL	RE	FT
14	-1.9	51	94	19	.45	.29	.032

★Recommended for heifers or cows.

★60 lb BW, -1.9 BW EPD, 14 CED. Excellent calving ease.

**Code of the West
by James P. Owen**

- *Live each day with courage
- *Take pride in your work
- *Always finish what you start
- *Do what has to be done
- *Be tough, but fair
- *When you make a promise, keep it
- *Ride for the brand
- *Talk less and say more
- *Remember that some things aren't for sale
- *Know where to draw the line



11

SVF FINAL ANSWER Y602

Angus Reg. #: 17140462
February 12, 2011 Tattoo: Y602



SIRE: SAV FINAL ANSWER 0035

D	SydGen Mandate 6079	SS Objective T510 OT 25 #
A	TK EDELLA W709	SydGen Gina 4235
M	TK Edella T384	SydGen Bullet TK Edella P168

\$Wean	\$Fdlot	\$Grid	\$Beef	BW	78
+27.91	+36.80	+32.59	+60.37	Adj WW	635
				Adj YW	1225

EPDs					Carcass EPDs		
CED	BW	WW	YW	Milk	MBL	RE	FT
6	1.9	53	97	24	.52	.39	.010



Lot 11

12

SVF FINAL ANSWER Y603

Angus Reg. #: 17140463
February 18, 2011 Tattoo: Y603



SIRE: SAV FINAL ANSWER 0035

D	Connealy Cattlelac	CA Future Direction 5321 #
A	TK KAREN W159	Black Crane of Conanga 204
M	TK Karen S465	Connealy Deep Canyon 454 # TK Karen 1281

\$Wean	\$Fdlot	\$Grid	\$Beef	BW	62
+32.11	+47.29	+19.58	+61.84	Adj WW	763
				Adj YW	1422

EPDs					Carcass EPDs		
CED	BW	WW	YW	Milk	MBL	RE	FT
11	-0.3	60	109	25	.37	.48	.052



Lot 12

- ★Recommended for heifers or cows.
- ★Impressive individual...Herd Bull here.

Be sure and check out the services we provide including the first breeding season guarantee and delivery policy on Page 3.

We offer free delivery of bulls up to 250 miles (we begin delivering the first of April) and we feed bulls free of charge up to April 10th.

All bulls will have undergone a complete breeding soundness exam. We will have an update sheet sale day that will include information such as scrotal and carcass ultrasound information.



Come to the sale with your trailer and take your bulls that day or pick up within a week after the sale and receive \$70 off per bull.

Angus Reference Sire

SAV FINAL ANSWER 0035



GDAR Traveler 71 #
SITZ TRAVELER 8180 #
 Sitz Everelda Entense 1137

Traveler 1148 GDAR #
 GDAR Miss Blackcap 567
 GDAR Rainmaker 340 #
 Sitz Everelda Entense 2335

Bon View Bando 598 #
SAV EMULOUS 8145
 SAV Sky Emulous 2124

Tehama Bando 155 #
 Bon View Dora 56 #
 Ellanin Sky Diver #
 Tail N 0383

FINAL ANSWER BALANCER EPDs

CE	BW	WW	YW	MILK	TMAT	GEST	CED
123	-4.8	42	97	20	41	-2.1	107

CARCASS EPDs

MB	REA	DtF	CW	CV	FM
.14	.15	1.6	22	38.98	40.43

Final Answer is a proven calving ease sire that bends the growth curve to offer exceptional performance, maternal strength and carcass quality. He sires more body depth, muscle and real world fleshing ability than most calving ease sires.
 12 years old and still producing

A+PLUSBALANCER -- FINAL ANSWER Sons

13

SVF ANSWER Y226

%Gelbvieh: 50% Reg #: 1199000
 Blk Polled 2-15-11 Tattoo: Y226

SIRE: SAV FINAL ANSWER 0035

D SVF Bud 105L GKT Bud 11G
 A SVF MS BUD 57N red P SVF Ms Kayla 17E
 M SVF Ms OT 54F DDF Otis ET
 SVF Y1

CV	FM
29.56	23.82

RE	.17	MB	.12

BW	80
Adj WW	756
Adj YW	1297

CE	BW	WW	YW	MILK	TMAT	GEST	CED
117	-2.0	44	91	20	42	-2.1	105

★Top notch performance bull out of one of our best purebred Gelbvieh cows.

14

SVF ANSWER Y144

%Gelbvieh: 13% Reg #: 1198967
 Blk Polled 2-7-11 Tattoo: Y144

SIRE: SAV FINAL ANSWER 0035

D Mytty In Focus AN SAF Focus of ER
 A SVF MS IN FOCUS T114 blk P Mytty Countess 906
 M SVF Ms Dusty 51M GKT Dusty 16J
 SVF Ms Kaiser 60B

CV	FM
30.82	31.57

RE	.14	MB	.11

BW	86
Adj WW	705
Adj YW	1324

CE	BW	WW	YW	MILK	TMAT	GEST	CED
119	-2.0	41	91	20	41	-2.4	106

★Add pounds with this bull.

Two top notch Final Answer sons here.



Lot 13



Lot 14

15

SVF ANSWER Y86

%Gelbvieh: 25% Reg #: 1198961
Blk Scurred 2-3-11 Tattoo: Y86



SIRE: SAV FINAL ANSWER 0035

D SCC New Design Ext 974 AN B/R New Design 036
A **SVF MS DESIGN R515 blk P** SCC Queen Ext 405
M SVF Ms Pst 38F RKG Powerstroke
SVF Ms Pst 38F

CV	FM
33.95	20.32

RE	MB
.08	.16

BW	76
Adj WW	668
Adj YW	1231

CE	BW	WW	YW	MILK	TMAT	GEST	CED
117	-4.0	32	73	23	38	-1.9	106

- ★Suitable for heifers.
- ★Long bodied bull with lots of eye appeal.



Lot 15

16

SVF ANSWER Y6

%Gelbvieh: 13% Reg #: 1198955
Blk Polled 1-18-11 Tattoo: Y6



SIRE: SAV FINAL ANSWER 0035

D Connealy Danny 5398 AN Connealy Danny Boy
A **SVF MS DANNY 5398 W26 blk P** Endova of Conanga 858
M SVF Ms 2V1 R50 T346 SVF 2V1 R50 AN
SVF Ms Black BB 64J

CV	FM
37.75	39.13

RE	MB
.12	.19

BW	62
Adj WW	659
Adj YW	1203

CE	BW	WW	YW	MILK	TMAT	GEST	CED
	-4.0	38	87	18	36		

- ★Top notch calving ease bull.

18

SVF ANSWER Y155

%Gelbvieh: 13% Reg #: 1198980
Blk Polled 2-8-11 Tattoo: Y155



SIRE: SAV FINAL ANSWER 0035

D Lyons New Design 0103 AN B/R New Design 036
A **SVF MS DESIGN R192 blk P** Lyons Allison 7020
M SVF Ms BB 54L GKT Boo Boo 155E
SVF Ms Triumph 170H

CV	FM
33.63	32.89

RE	MB
.13	.21

BW	85
Adj WW	633
Adj YW	1229

CE	BW	WW	YW	MILK	TMAT	GEST	CED
117	-2.0	31	79	19	34	-2.1	106

- ★Top 15% feedlot merit EPD.
- ★Top 2% calving-ease EPD.

17

SVF ANSWER Y214

%Gelbvieh: 13% Reg #: 1198978
Blk Polled 2-14-11 Tattoo: Y214



SIRE: SAV FINAL ANSWER 0035

D Dr J Analyst M250 AN BCC Bushwacker 41-93
A **SVF MS ANALYST U180 blk P** GAR Precision 706
M SVF Ms Black Cap 298J Mr Scotch 9440 38G AN
SVF Ms Pst 53F

CV	FM
30.82	36.07

RE	MB
.12	.14

BW	80
Adj WW	656
Adj YW	1278

CE	BW	WW	YW	MILK	TMAT	GEST	CED
116	-2.0	37	88	18	36	-1.6	106

- ★Solid beef bull here.



Lot 17



**A+PLUSBALANCER
CONNEALY ANSWER 64A son**

Angus Reference Sire

CONNEALY ANSWER 64A

Sitz Traveler 8180 #
SAV FINAL ANSWER 0035 #
SAV Emulous 8145

GDAR Traveler 71 #
Sitz Everelda Entense 1137
Bon View Bando 598 #
SAV Sky Emulous 2124

Wulffs Ext 6106 #
BLK CY OF CONANGA 203 9-34
Blk Crane of Conanga 204

N Bar Emulation EXT #
Wulffs Erica Dianna C116
Connealy Forefront #
Blk Cala of Conanga 5203 #

64A BALANCER EPDs

CE	BW	WW	YW	MILK	TMAT	GEST	CED
	-1.9	22	56	9	20		

CARCASS EPDs

MB	REA	DtF	CW
.	.	.	.

CV	FM
.	3.70

19

SVF ANSWER Y285

%Gelbvieh: 13% Reg #: 1199349
Blk Polled 2-25-11 Tattoo: Y285



SIRE: CONNEALY ANSWER 64A

D SCC New Design Ext 974 AN B/R New Design 036
A **SVF MS DESIGN R25 blk P** SCC Queen Ext 405
M SVF Ms Cherokee Canyon 23N Cherokee Cnyn 4912 AR
SVF Ms Bud 149L

CV	FM
	23.11

RE	MB
.	.


BW	61
Adj WW	626
Adj YW	1124

CE	BW	WW	YW	MILK	TMAT	GEST	CED
	-6.0	35	80	21	39		

★Top notch heifer bull.

Angus Reference Sire

GT SHEAR FORCE



Gardens Prime Time #
N BAR PRIME TIME D806 #
N Bar Miss Emulous A404

RR Traveler 5204 #
Green Garden Susie 1246 S1 #
N Bar Emulation Ext Z52
N Bar Miss Emulous X3091 #

Plowman 1627 of Millbrae SAR #
GT Siskin 106 #
GT Rosalita 509

DHD Traveler 6807 #
MB Joanie 8E8 #
GT Maxwell
GT Rosalita 193

ANGUS EPDs

CED	BW	WW	YW	Milk	MB	REA	FT
7	2.5	51	107	23	+72	-.04	+.089

Carcass EPDs

MB	REA	FT
+72	-.04	+.089

\$Values

\$W	\$F	\$G	\$B
+26.50	+49.02	+14.86	+51.83

Shear Force has an outstanding overall EPD package with excellent carcass value and curve bender spread. Progeny have been producer favorites with excellent structure, thickness and fleshing ability with super disposition. He ranks in the top 10% of the Angus breed for progeny proven tenderness with a -.26 Shear Force EPD.

ANGUS -- SHEAR FORCE Sons

20

SVF SHEAR FORCE Y15

Angus Reg. #: 17094420
January 22, 2011 Tattoo: Y15



SIRE: GT SHEAR FORCE

D SAV Final Answer 0035 #
A **SVF MS ANSWER W6**
M SVF Ms In Focus T8

Sitz Traveler 8180 #
SAV Emulous 8145
Mytty In Focus #
SVF Ms New Design R183

\$Wean	\$Fdlot	\$Grid	\$Beef
+31.03	+42.90	+23.57	+56.47

BW	67
Adj WW	746
Adj YW	1268

EPDs				Carcass EPDs			
CED	BW	WW	YW	Milk	MBL	RE	FT
10	0.4	57	104	26	.56	.22	.058



Lot 20

- ★Recommended for heifers or cows.
- ★Shear Force, Final Answer, In Focus.
- ★Excellent birth to weaning spread.

21 SVF SHEAR FORCE Y22

Angus Reg. #: 17094422
January 22, 2011 Tattoo: Y22



SIRE: GT SHEAR FORCE

D Connealy 5398 4108 Connealy Danny 5398
A **SVF MS C5398 4108 W289** Poppy of Conanga 763
M SVF Ms 112 R32 Rito 112 of 2536 Rito 616 #
SVF Ms Max 96F

\$Wean	\$Fdlot	\$Grid	\$Beef
+27.58	+59.22	+26.15	+69.20

BW	79
Adj WW	801
Adj YW	1431

EPDs					Carcass EPDs		
CED	BW	WW	YW	Milk	MBL	RE	FT
3	2.4	65	121	27	.66	.25	.047

- ★Thick, deep and correct.
- ★Outstanding bull here. Herd bull material.



Lot 21



Lot 22

22 SVF SHEAR FORCE Y9

Angus Reg. #: 17094418
January 20, 2011 Tattoo: Y9



SIRE: GT SHEAR FORCE

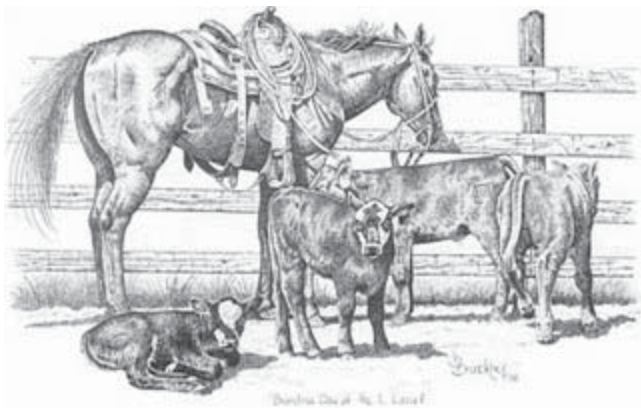
D GAR-EGL Protege Rito 112 of 2536 Rito 616 #
A **SVF MS PROTEGE W92** LB 6807 Isabel 339
M SVF Ms In Focus S47 Mytty In Focus #
KM Barb 1678

\$Wean	\$Fdlot	\$Grid	\$Beef
+21.22	+62.14	+32.42	+74.84

BW	83
Adj WW	753
Adj YW	1407

EPDs					Carcass EPDs		
CED	BW	WW	YW	Milk	MBL	RE	FT
1	4.2	64	123	25	1.03	.10	.041

- ★Excellent performance bull.
- ★Herdbull



Julie Kirchhoff, Deb Christy and sister-in-law, Lori Rahjes are the ones to see to check-in and settle up. Lori's mom, Charlotte Rahjes sitting behind them making sure they're doing it right. 😊

A+PLUSBALANCER -- SHEAR FORCE Sons

Angus Reference Sire

GT SHEAR FORCE

Gardens Prime Time # RR Traveler 5204 #
N BAR PRIME TIME D806 # Green Garden Susie 1246 S1 #
 N Bar Miss Emulous A404 N Bar Emulation Ext Z52
 N Bar Miss Emulous X3091 #

Plowman 1627 of Millbrae SAR # DHD Traveler 6807 #
GT Siskin 106 # MB Joanie 8E8 #
 GT Rosalita 509 GT Maxwell
 GT Rosalita 193

SHEAR FORCE BALANCER EPDs

CE	BW	WW	YW	MILK	TMAT	GEST	CED
111	-0.8	40	104	18	38	-2.5	102

CARCASS EPDs

MB	REA	DtF	CW	CV	FM
.36	-.06	4.8	11	45.98	53.92

Shear Force has an outstanding overall EPD package with excellent carcass value and curve bender spread. Progeny have been producer favorites with excellent structure, thickness and fleshing ability with super disposition. He ranks in the top 5% of the Angus breed for progeny proven tenderness with a -.31 Shear Force EPD.

24

SVF SHEAR FORCE Y42

%Gelbvieh: 9% Reg #: 1199005
Blk Polled 1-24-11 Tattoo: Y42



SIRE: GT SHEAR FORCE

D Mytty In Focus AN SAF Focus of ER
 A **SVF MS IN FOCUS W155 blk P** Mytty Countess 906
 M SVF Ms Design 6P SCC New Design Ext 974 AN
 SVF Ms Dusty 51M

CV	FM
37.06	45.55

RE	.03	MB	.26

BW	74
Adj WW	662
Adj YW	1169

CE	BW	WW	YW	MILK	TMAT	GEST	CED
113	-2.0	35	86	20	37	-2.6	104

- ★Top notch heifer bull here.
- ★Top 1% Feedlot Merit

23

SVF SHEAR FORCE Y13

%Gelbvieh: 13% Reg #: 1199004
Blk Polled 1-21-11 Tattoo: Y13



SIRE: GT SHEAR FORCE

D Connealy Danny 5398 AN Connealy Danny Boy
 A **SVF DANNY 5398 W114 blk P** Endova of Conanga 858
 M SVF Ms Pinnacle R115 GAR Pinnacle AN
 SVF Ms Black BB 71J

CV	FM
40.04	40.53

RE	.06	MB	.29

BW	83
Adj WW	674
Adj YW	1235

CE	BW	WW	YW	MILK	TMAT	GEST	CED
	-0.5	35	88	17	34		

- ★Top 2% Carcass Value EPD
- ★Top 4% Feedlot Merit EPD



Lot 23

Email from a satisfied customer

"Got the bulls home and dumped them out. Got them together and they look like two peas in a pod. Awesome bulls! The reason for me sending you a note is I took Sherry over tonight to show her the bulls and they were at the far end of the pen and I hollered at them and here they come. She wants to know what kind of treats you and Lori feed them so she can get some (she is serious LOL). Had a lot of fun yesterday at your sale. Keep up the good work!!

--Jack and Sherry Gager

Angus Reference Sire

WOODHILL MAINLINE



Connealy Timeline #
CONNEALY DANNY BOY #
 Energy of Conanga 4851

Connealy Dateline #
 Enchants Fortune Conanga 6127#
 Hoff Heartland SC 456 #
 Divdends Envy of Conanga #

N Bar Bando 598 Y2587
WDHILL BLKBIRD 1288-138K #
 Woodhill Blackbird 463-1288 #

Bon View Bando 598 #
 N Bar Clova Pride V649 #
 VF Venture Forward #
 Woodhill Blackbird 3811-463

ANGUS EPDs					Carcass EPDs		
CED	BW	WW	YW	Milk	MB	REA	FT
7	-1.0	59	106	12	+23	+1.01	.033

\$Values

\$W	\$F	\$G	\$B
+33.28	+44.29	+19.22	+70.29

Mainline offers a unique pedigree with incredible muscle & power for a calving ease sire. Definite short gestation length sire who ranks in the top 10% of the Angus breed for BW EPD combined with top 4% yearling growth. His REA EPD puts him in elite company on the Main Sire list where he easily excels from a birth weight and calving ease standpoint. +18 Docility EPD and ranks in the top 30% for feed efficiency and the top 20% for tenderness through the Angus Sire Alliance.

ANGUS -- MAINLINE sons

25

SVF MAINLINE Y5

Angus Reg. #: 17094642
 January 7, 2011 Tattoo: Y5



SIRE: WOODHILL MAINLINE

D SAV Final Answer 0035 #	Sitz Traveler 8180 #
A MISSION RUTH H26 9S1	SAV Emulous 8145
M Mission Ruth H26	B/R New Frontier 095 #
	Mission Ruth 4630

\$Wean	\$Fdot	\$Grid	\$Beef
+33.04	+48.98	+29.21	+77.16

BW	65
Adj WW	744
Adj YW	1326

EPDs					Carcass EPDs		
CED	BW	WW	YW	Milk	MBL	RE	FT
8	-0.5	64	112	19	.59	.57	.030

★Top notch calving ease with performance.

26

SVF MAINLINE Y8

Angus Reg. #: 17094640
 January 20, 2011 Tattoo: Y8



SIRE: WOODHILL MAINLINE

D Harb Pendleton 765 JH	SAV Final Answer 0035 #
A SVF MS PENDLETON W34	Harb Black Lady 375 JH #
M SVF Ms ND 198M T293	SVF New Design 198M
	SVF New Design 4N

\$Wean	\$Fdot	\$Grid	\$Beef
+34.42	+39.33	+23.91	+69.76

BW	65
Adj WW	733
Adj YW	1235

EPDs					Carcass EPDs		
CED	BW	WW	YW	Milk	MBL	RE	FT
8	-0.4	60	102	22	.38	.63	.028

★Recommended for heifers or cows.

Two outstanding bulls with great potential



Lot 25



Lot 26

27

SVF MAINLINE Y198

Angus Reg. #: 17094644
February 12, 2011 Tattoo: Y198



SIRE: WOODHILL MAINLINE

D	Rito 2V1 of 2536 1407 #	Bon View New Design 1407 #
A	SVF MS 2V1 S199	GAR Precision 2536
M	SVF Ms Frontline 95K	Connealy Frontline #
		SVF Ms Dividend 101E

\$Wean	\$Fdlot	\$Grid	\$Beef	BW	78
+30.45	+43.85	+23.47	+71.17	Adj WW	716
				Adj YW	1297

EPDs					Carcass EPDs		
CED	BW	WW	YW	Milk	MBL	RE	FT
5	0.8	60	106	18	.30	.90	.032



Lot 27

★Recommended for heifers or cows.

28

SVF MAINLINE Y153

Angus Reg. #: 17094646
February 20, 2011 Tattoo: Y153



SIRE: WOODHILL MAINLINE

D	KM New Design 131	Bon View New Design 1407 #
A	SVF MS NEW DESIGN S351	KM Coquette 2589
M	SVF Ms Bushwacker 60L	RP 3rd Bushwacker #
		Ms Scotch 1483 34G

\$Wean	\$Fdlot	\$Grid	\$Beef	BW	72
+29.59	+38.58	+23.23	+67.93	Adj WW	710
				Adj YW	1248

EPDs					Carcass EPDs		
CED	BW	WW	YW	Milk	MBL	RE	FT
6	0.3	54	99	21	.27	.84	.026

★Excellent birth to weaning spread.

30

SVF MAINLINE Y32

Angus Reg. #: 17094638
January 24, 2011 Tattoo: Y32



SIRE: WOODHILL MAINLINE

D	Harb Pendleton 765 JH	SAV Final Answer 0035 #
A	SVF MS PENDLETON W35	Harb Black Lady 375 JH #
M	SVF Ms Future 43 T396	KM Future Direction 43
		SVF Ms Design 200P

\$Wean	\$Fdlot	\$Grid	\$Beef	BW	64
+32.95	+30.69	+27.30	+71.15	Adj WW	690
				Adj YW	1151

EPDs					Carcass EPDs		
CED	BW	WW	YW	Milk	MBL	RE	FT
8	-1.3	52	91	22	.39	.74	.021

★Top notch heifer bull.

29

SVF MAINLINE Y89

Angus Reg. #: 17094651
February 4, 2011 Tattoo: Y89



SIRE: WOODHILL MAINLINE

D	DCC Rito Prime 115	Rito 616 of 4B20 6807 #
A	SVF MS PRIME 60P	DCC Rita 482 of D806 185
M	SVF Ms Dividend 151F	Sedgwicks Dividend 8081
		SVF Ms 6T6 11C

\$Wean	\$Fdlot	\$Grid	\$Beef	BW	81
+24.72	+50.26	+16.10	+65.16	Adj WW	720
				Adj YW	1429

EPDs					Carcass EPDs		
CED	BW	WW	YW	Milk	MBL	RE	FT
3	0.9	56	110	16	.21	.59	.025

★You'll like this bull.



Lot 29



31

SVF MAINLINE Y75

Angus Reg. #: 17094643
February 24, 2011 Tattoo: Y75



SIRE: WOODHILL MAINLINE

D Rito 112 of 2536 Rito 616 # Rito 616 of 4B20 6807 #
A **SVF MS 112 S57** GAR Precision 2536
M SVF Ms Krug 234M SVF Krugerrand 33H
SVF Ms LA 280H

\$Wean	\$Fdlot	\$Grid	\$Beef	BW	69
+34.27	+31.41	+24.94	+64.74	Adj WW	673
				Adj YW	1127

EPDs					Carcass EPDs		
CED	BW	WW	YW	Milk	MBL	RE	FT
8	-0.8	58	94	15	.36	.48	.014

★Recommended for heifers or cows.
★Top 15% \$Beef

33

SVF MAINLINE Y164

Angus Reg. #: 17094647
February 9, 2011 Tattoo: Y164



SIRE: WOODHILL MAINLINE

D 4 Point 8 of Ironwood # Ironwood New Level #
A **SVF MS 4 POINT 8 R56** Wardens Barbar 209 6370 8248
M SVF KMD 171M KM New Design 1060
SVF Ms Triumph 144H

\$Wean	\$Fdlot	\$Grid	\$Beef	BW	80
+28.54	+29.38	+19.61	+60.87	Adj WW	662
				Adj YW	1206

EPDs					Carcass EPDs		
CED	BW	WW	YW	Milk	MBL	RE	FT
6	0.4	50	89	16	.25	.57	.027

★Recommended for heifers or cows.
★Top 25% \$Beef

32

SVF MAINLINE Y93

Angus Reg. #: 17094645
February 4, 2011 Tattoo: Y93



SIRE: WOODHILL MAINLINE

D DCC Rito Prime 115 Rito 616 of 4B20 6807 #
A **SVF MS RITO PRIME S123** DCC Rita 482 of D806 185
M SVF Ms Dividend 125E Sedgwicks Dividend 8081
SVF Ms Ambush 5B

\$Wean	\$Fdlot	\$Grid	\$Beef	BW	72
+30.75	+30.27	+20.68	+62.06	Adj WW	663
				Adj YW	1178

EPDs					Carcass EPDs		
CED	BW	WW	YW	Milk	MBL	RE	FT
3	0.3	53	91	17	.24	.67	.026

★Top 25% \$Beef with a positive \$EN.

34

SVF MAINLINE Y150

Angus Reg. #: 17094649
February 8, 2011 Tattoo: Y150



SIRE: WOODHILL MAINLINE

D Nichols Extra H6 # N Bar Emulation Ext #
A **SVF MS EXTRA 93P** Nichols Eileen May F261
M Ms Easy Fortune 113K SAF Easy Fortune #
SVF SG 98D #

\$Wean	\$Fdlot	\$Grid	\$Beef	BW	82
+27.19	+34.35	+13.13	+57.53	Adj WW	657
				Adj YW	1239

EPDs					Carcass EPDs		
CED	BW	WW	YW	Milk	MBL	RE	FT
4	1.2	51	94	18	.21	.33	.028



Unable to attend?
Let DVAuction bring the sale to your computer!

Busy during the sale?
Let DVAuction represent your bid while you're away!

Visit www.DVAuction.com and REGISTER today!

- * Bid on real-time auctions with live audio/video
- * Learn about our new proxy bidding feature

For questions, contact us at (402) 474-5557 - support@dvauction.com
or Tami McIntosh at (308) 870-3661 - tami@dvauction.com

DVAuction
Broadcasting Real-Time Auctions

* High speed internet access required

A+PLUSBALANCER MAINLINE Sons

Angus Reference Sire

WOODHILL MAINLINE

Connealy Timeline #
CONNEALY DANNY BOY #
 Energy of Conanga 4851

Connealy Dateline #
 Enchants Fortune Conanga 6127#
 Hoff Heartland SC 456 #
 Divdends Envy of Conanga #

N Bar Bando 598 Y2587
WDHILL BLKBIRD 1288-138K #
 Woodhill Blackbird 463-1288 #

Bon View Bando 598 #
 N Bar Clova Pride V649 #
 VF Venture Forward #
 Woodhill Blackbird 3811-463

MAINLINE BALANCER EPDs

CE	BW	WW	YW	MILK	TMAT	GEST	CED
109	-4.3	44	99	9	31	-0.8	99

CARCASS EPDs

MB	REA	DtF	CW	CV	FM
.17	.20	2.6	21	41.16	40.95

Mainline offers a unique pedigree with incredible muscle & power for a calving ease sire.
 +18 Docility EPD and ranks in the top 30% for feed efficiency and the top 20% for tenderness through the Angus Sire Alliance.



35

SVF MAINLINE Y109

%Gelbvieh: 25% Reg #: 1198994
Blk Polled 2-5-11 Tattoo: Y109



SIRE: WOODHILL MAINLINE

D BAG Mr Nagurski 79R Nord Nagurski M142J
 A **SVF T356 blk P** BAG Miss DP Lilly 94L
 M SVF Ms New Design 256N AN Lyons New Design 0103
 SVF Ms Scotch Cap 120H

CV	FM
32.78	32.27

RE	.11	MB	.14

BW	74
Adj WW	676
Adj YW	1307

CE	BW	WW	YW	MILK	TMAT	GEST	CED
108	-3.0	41	90	13	33	-1.0	101

- ★Suitable for heifers or cows.
- ★Solid Beef bull here.



Lot 35

BALANCER™

What the Industry Wants...What the Industry Needs!

There are sound reasons that a majority of pork and poultry market animals are already the product of hybrid genetics--Consistency, Predictability, and Economic Efficiency.

Balancers offer commercial cattle producers these same advantages today.

Balancer breeders understand that a single breed cannot fit all of the challenges of the beef industry. They understand that the commercial cattle business drives the success of the seedstock industry. That's why they design their breeding programs and align their partnerships with the interest of the commercial industry foremost in their minds. In this case, Balancers are backed up by the same genetic documentation and programs that commercial users enjoy through the American Gelbvieh Association.

We have taken the Balancer one step further with A+PLUSBalancer

Pedigree proven, performance tested, genetic blend of Angus and Gelbvieh bloodlines
 producing superior composite cattle.

Pedigree Proven: Generations of documented genetics.

36

SVF MAINLINE Y131

%Gelbvieh: 13% Reg #: 1198956
Blk Polled 2-6-11 Tattoo: Y131



SIRE: WOODHILL MAINLINE

D SCC New Design Ext 974 AN B/R New Design 036
A SVF MS DESIGN 6P blk P SCC Queen Ext 405
M SVF Ms Dusty 51M GKT Dusty 16J
SVF Ms Kaiser 60B

CV	FM
40.54	33.41

RE	.15	MB	.19
----	-----	----	-----

BW	83
Adj WW	674
Adj YW	1301

CE	BW	WW	YW	MILK	TMAT	GEST	CED
109	-2.0	37	87	15	33	-1.3	101

★Long bodied performance bull.



Lot 36

37

SVF MAINLINE Y209

%Gelbvieh: 13% Reg #: 1198989
Blk Polled 2-13-11 Tattoo: Y209



SIRE: WOODHILL MAINLINE

D LCC New Standard AN Bon View New Design 1407
A SVF NEW STANDARD S250 blk P LCC Sunset K3118
M SVF Ms Cocoa 229K SVF Mr Cocoa 143G

CV	FM
33.76	44.52

RE	.08	MB	.18
----	-----	----	-----

BW	78
Adj WW	635
Adj YW	1151

CE	BW	WW	YW	MILK	TMAT	GEST	CED
112	-3.0	36	86	17	35	-1.0	102

★Top notch heifer bull.



Lot 37

38

SVF MAINLINE Y71

%Gelbvieh: 6% Reg #: 1198957
Blk Polled 1-31-11 Tattoo: Y71



SIRE: WOODHILL MAINLINE

D Mytty In Focus AN SAF Focus of ER
A SVF MS FOCUS U9 blk P Mytty Countess 906
M SVF Ms Rito Prime S145 DCC Rito Prime 115 AN
SVF Ms HD 65K

CV	FM
34.06	42.46

RE	.17	MB	.16
----	-----	----	-----

BW	87
Adj WW	643
Adj YW	1235

CE	BW	WW	YW	MILK	TMAT	GEST	CED
111	-2.0	35	88	14	32	-1.5	102

★Top 3% Feedlot Merit.



Lot 38

The Feedlot Merit (FM) EPD

The Feedlot Merit EPD is expressed in dollars per head, value passed to progeny. Specifically, the Feedlot Merit EPD measures the dollar value associated with the expected gain and feedlot efficiency of progeny when fed in a "typical" feedlot arrangement. As an example, a bull with Feedlot Merit EPD of \$15 is expected to sire calves that will perform \$30 per head better than calves sired by a bull with an EPD of \$-15.

The Carcass Value (CV) EPD

Like the Feedlot Merit, this is expressed in dollar value per head. It is comparing progeny of one animal to another in dollar differences when progeny are sold on a grid. This value is a true economic comparison; it is not grid merit at a standard carcass weight as many breeds calculate. Projected carcass weight, penalties for "out" weight carcasses (too heavy or light), quality grade and yield grade premiums and discounts are all included in calculating this \$EPD value.

Angus Reference Sire

HOOVER DAM



SAF Connection #
SYDGEN C C & 7
 SydGen Forever Lady 4087

SVF Gdar 216 LTD #
 SAF Royal Queen 5084
 SydGen 1407 Corona 2016
 SAF Forever Lady 8292

TC Gridiron 258 #
ERICA OF ELLSTON C124 #
 Erica of Ellston V65

GAR Grid Maker #
 TC Blackbird 7049 #
 SA Neutron 377 #
 Shottish V047

ANGUS EPDs					Carcass EPDs		
CED	BW	WW	YW	Milk	MB	REA	FT
10	0.2	47	97	35	+58	+1.00	+0.05

\$Values

\$W	\$F	\$G	\$B
+29.53	+39.38	+41.52	+68.58

Moderate framed, powerful C C & 7 son who ranks #6 in the breed for Docility EPD. Progeny are thick, attractive and correct with a highly sought after combination of calving ease, muscle and docility. Heavy early usage has made him one of the most popular and most proven young sires in the breed.

ANGUS -- HOOVER DAM sons

39

SVF HOOVER Y70

Angus Reg. #: 17094700
 January 28, 2011 Tattoo: Y70



SIRE: HOOVER DAM

D GAR Retail Product #
 A **SVF MS PRODUCT T166**
 M Ms New Design 21K

GAR Precision 1680 #
 GAR Ext 4927
 B/R New Design 036 #
 SVF Ms Scotch Cap 120H

\$Wean	\$Fdot	\$Grid	\$Beef	BW	81
+27.34	+27.03	+35.90	+61.75	Adj WW	709
				Adj YW	1203

EPDs					Carcass EPDs		
CED	BW	WW	YW	Milk	MBL	RE	FT
5	2.6	48	86	33	.46	.70	.006



Lot 39

The Hoover Dam's are a thick, correct and attractive set of bulls.

40

SVF HOOVER Y122

Angus Reg. #: 17094702
 February 6, 2011 Tattoo: Y122



SIRE: HOOVER DAM

D Rito 112 of 2536 Rito 616 #
 A **SVF MS 112 R40**
 M SVF New Design 233M

Rito 616 of 4B20 6807 #
 GAR Precision 2536
 Lyons New Design 0103
 SVF SG 129D

\$Wean	\$Fdot	\$Grid	\$Beef	BW	84
+27.85	+36.55	+33.15	+61.68	Adj WW	713
				Adj YW	1257

EPDs					Carcass EPDs		
CED	BW	WW	YW	Milk	MBL	RE	FT
5	1.8	51	96	33	.49	.52	.009



Lot 40

41

SVF HOOVER Y203

Angus Reg. #: 17094704
February 12, 2011 Tattoo: Y203



SIRE: HOOVER DAM

D	SCC New Design Ext 974	B/R New Design 036 #
A	SVF MS DESIGN 35P	SCC Queen Ext 405
M	SVF Ms Triumph 14J	Hoff Triumph SC 927 #
		Ms Scotch 1483 34G

\$Wean	\$Fdlot	\$Grid	\$Beef	BW	77
+27.29	+34.95	+31.79	+64.14	Adj WW	687
				Adj YW	1292

EPDs					Carcass EPDs		
CED	BW	WW	YW	Milk	MBL	RE	FT
7	0.4	47	93	29	.41	.71	.011

★Recommended for heifers or cows



Lot 41

42

SVF HOOVER Y231

Angus Reg. #: 17094698
February 15, 2011 Tattoo: Y231



SIRE: HOOVER DAM

D	DCC Rito Prime 115	Rito 616 of 4B20 6807 #
A	SVF MS PRIME 115 T226	DCC Rita 482 of D806 185
M	SVF Ms Dividend 210J	SVF Dividend 31E
		SVF Dividend 117E

\$Wean	\$Fdlot	\$Grid	\$Beef	BW	79
+25.76	+25.91	+30.65	+56.36	Adj WW	646
				Adj YW	1203

EPDs					Carcass EPDs		
CED	BW	WW	YW	Milk	MBL	RE	FT
4	1.7	43	83	27	.36	.68	.009



Lot 42



Nephews, Will Rahjes and Brice Korobka, on either side of Chris Riedel making sure he is keeping up with doing the freezebranding correctly.

A+PLUSBALANCER -- HOOVER DAM sons

44

SVF HOOVER Y197

%Gelbvieh: 13% Reg #: 1198970
Blk Polled 2-12-11 Tattoo: Y197



SIRE: HOOVER DAM

D Rito 112 of 2536 Rito 616 AN Rito 616 of 4B20 6807
A SVF MS 112 R137 blk P GAR Precision 2536
M SVF Ms Black Cap 224J Mr Scotch 9440 38G AN
SVF Ms Pst 38F

CV	FM	RE	MB	BW	81
.	28.87	.	.	Adj WW	690
				Adj YW	1280

CE	BW	WW	YW	MILK	TMAT	GEST	CED
	-3.0	37	86	24	43	.	

★Good performance bull here.



Lot 44

45

SVF HOOVER Y148

%Gelbvieh: 6% Reg #: 1198974
Blk Polled 2-8-11 Tattoo: Y148



SIRE: HOOVER DAM

D Rito 2V1 of 2536 1407 AN Bon View New Design 1407
A SVF MS 2V1 S157 blk P GAR Precision 2536
M SVF 90M SVF Ms Black Cap 34J

CV	FM	RE	MB	BW	79
.	39.23	.	.	Adj WW	666
				Adj YW	1088

CE	BW	WW	YW	MILK	TMAT	GEST	CED
	-3.0	35	79	22	39	.	

★Good heifer bull.



HOOVER DAM BALANCER EPDs

CE	BW	WW	YW	MILK	TMAT	GEST	CED
	-4.8	41	100	29	50		

CARCASS EPDs

MB	REA	DtF	CW	CV	FM
.	45.63

Moderate framed, powerful C C & 7 son who ranks #6 in the breed for Docility EPD. Progeny are thick, attractive and correct with a highly sought after combination of calving ease, muscle and docility. Heavy early usage has made him one of the most popular and most proven young sires in the breed.

46

SVF HOOVER Y129

%Gelbvieh: 13% Reg #: 1198977
Blk Polled 2-6-11 Tattoo: Y129



SIRE: HOOVER DAM

D SVF 07 90D AN DHD Traveler 6807
A SVF MS 07S 180L blk P Ms A Gal W95
M SVF Ms Black Dividend TC Dividend 963 AN
SVF TD 71D

CV	FM	RE	MB	BW	59
.	30.09	.	.	Adj WW	621
				Adj YW	1137

CE	BW	WW	YW	MILK	TMAT	GEST	CED
	-5.0	31	74	23	38	.	

★Top notch heifer bull.



Lot 46

Angus Reference Sire

B/R NEW DAY 454



AAR New Trend #
BOYD NEW DAY 8005 #
 SVF Forever Lady 57D

B/R New Design 323 #
B/R RUBY 1224
 HF Ruby 036-951

VDAR Shoshone 548 #
 Donna AAR 74
 Leachman Right Time #
 SVF Forever Lady 1128

B/R New Design 036 #
 B/R Ruby of Tiffany 155
 SVF Gdar 216 LTD #
 B/R Ruby 624

ANGUS EPDs					Carcass EPDs		
CED	BW	WW	YW	Milk	MB	REA	FT
6	1.7	56	104	29	+64	+91	-.001

\$Values

\$W	\$F	\$G	\$B
+37.56	+43.34	+41.67	+77.40

New Day 454 is impressive with every \$Value Index in the top 10%. He sires thick, moderate, sound offspring. Add to this his docility (Top 1%) and you understand why he is so popular. His value is enhanced because his genetics are a good fit for a wide variety of pedigrees and cattle types.

ANGUS -- NEW DAY sons

47

SVF NEW DAY Y35

Angus Reg. #: 17096168
 January 24, 2011 Tattoo: Y35



SIRE: B/R NEW DAY 454

D SAV Final Answer 0035 #
 A **LT BARBARAMERE NELL 7029**
 M LT Barbaramere Nell 306T

Sitz Traveler 8180 #
 SAV Emulous 8145
 BR Midland #
 Sitz Barbaramere Nell 1520

\$Wean	\$Fdlot	\$Grid	\$Beef	BW	71
+31.54	+48.71	+34.17	+69.92	Adj WW	713
				Adj YW	1331

EPDs				Carcass EPDs			
CED	BW	WW	YW	Milk	MBL	RE	FT
7	1.3	62	111	27	.67	.57	.042

48

SVF NEW DAY Y49

Angus Reg. #: 17096167
 January 26, 2011 Tattoo: Y49



SIRE: B/R NEW DAY 454

D Dr J Analyst M250
 A **SVF MS ANALYST W110**
 M SVF Ms 112 S44

BCC Bushwacker 41-93 #
GAR Precision 706
 Rito 112 of 2536 Rito 616 #
 Ms Scotch 1483 68G

\$Wean	\$Fdlot	\$Grid	\$Beef	BW	72
+30.20	+54.14	+38.52	+73.33	Adj WW	708
				Adj YW	1375

EPDs				Carcass EPDs			
CED	BW	WW	YW	Milk	MBL	RE	FT
3	1.5	63	116	28	.76	.50	.019

★Recommended for heifers or cows.

Two outstanding curvebenders here.



Lot 47



Lot 48

49

SVF NEW DAY Y95

Angus Reg. #: 17096169
February 5, 2011 Tattoo: Y95



Lot 49

SIRE: B/R NEW DAY 454

DCC Rito Prime 115 Rito 616 of 4B20 6807 #
SVF MS RITO PRIME R9 DCC Rita 482 of D806 185
 SVF Ms Pinnacle 136N GAR Pinnacle #
 SVF Ms Trend 83F

\$Wean	\$Fdlot	\$Grid	\$Beef	BW	69
+29.94	+32.18	+35.29	+68.96	Adj WW	651
				Adj YW	1179

EPDs					Carcass EPDs		
CED	BW	WW	YW	Milk	MBL	RE	FT
5	1.1	51	92	26	.52	.76	.015

50

SVF NEW DAY Y235

Angus Reg. #: 17096171
February 16, 2011 Tattoo: Y235



SIRE: B/R NEW DAY 454

KM New Design 131 Bon View New Design 1407 #
SVF MS DESIGN 155P KM Coquette 2589
 SVF Walker 6M SVF Walker 82K
 Ms Triumph 3K

\$Wean	\$Fdlot	\$Grid	\$Beef	BW	87
+28.08	+24.53	+42.21	+62.57	Adj WW	692
				Adj YW	1162

EPDs					Carcass EPDs		
CED	BW	WW	YW	Milk	MBL	RE	FT
1	2.9	49	84	30	.74	.52	.001

Come to the sale with your trailer and take your bulls that day or pick up within a week after the sale and receive \$70 off per bull.

A+PLUSBALANCER NEW DAY 454 sons

51

SVF NEW DAY Y33

%Gelbvieh: 25% Reg #: 1199356
Blk Polled 1-24-11 Tattoo: Y33



SIRE: B/R NEW DAY 454

SAV Final Answer 0035 Sitz Traveler 8180
SVF MS ANSWER W120 blk P SAV Emuus 8145
 SVF Ms Black Cocoa 47J TLR Cocoa 35C
 SVF Ms Talent 349C

CV	FM	RE	MB	BW	74
.	32.96	.	.	Adj WW	761
				Adj YW	1296

CE	BW	WW	YW	MILK	TMAT	GEST	CED
	-3.0	50	99	22	47		

NEW DAY 454 BALANCER EPDs

CE	BW	WW	YW	MILK	TMAT	GEST	CED
	-2.9	49	108	23	48		

CARCASS EPDs

MB	REA	DtF	CW	CV	FM
					47.74

52

SVF B NEW DAY Y62

%Gelbvieh: 13% Reg #: 1199357
Blk Polled 1-27-11 Tattoo: Y62



SIRE: B/R NEW DAY 454

GT Shear Force AN N Bar Prime Time D806
SVF SHEAR FORCE W250 blk P GT Siskin 106
 SVF Ms Traveler 170K SVF 07 90D AN
 SVF Ms Ky 62F

CV	FM	RE	MB	BW	78
.	50.50	.	.	Adj WW	733
				Adj YW	1494

CE	BW	WW	YW	MILK	TMAT	GEST	CED
	-2.0	43	104	21	43		



Lot 52

★ Tremendous spread bull. Herd bull material.



Lot 53

53

SVF NEW DAY Y111

%Gelbvieh: 13% Reg #: 1199354
Blk Polled 2-5-11 Tattoo: Y111



SIRE: B/R NEW DAY 454

D SVF 2V1 R50 AN Rito 2V1 of 2536 1407
A **SVF MS 2V1 R50 T237 blk P** Ms Fortune 36G
M SVF Ms Design 121P SCC New Design Ext 974
SVF 108H

CV	FM
.	42.69

RE	.	MB	.
----	---	----	---

BW	81
Adj WW	727
Adj YW	1341

CE	BW	WW	YW	MILK	TMAT	GEST	CED
	-1.0	47	103	24	47		

Outstanding set of A+PLUSBalancers out of New Day 454.

54

SVF NEW DAY Y240

%Gelbvieh: 38% Reg #: 1199352
Blk Polled 2-18-11 Tattoo: Y240



SIRE: B/R NEW DAY 454

D WAC Fullback 011G KCF Bennett Anchor B227
A **SVF MS FULLBACK 183L blk P** WAC Ms Otis 21-038E
M SVF Ms Celebration 316C LAR Polled Celebration 541T
SVF 16A

CV	FM
.	24.28

RE	.	MB	.
----	---	----	---

BW	85
Adj WW	688
Adj YW	1249

CE	BW	WW	YW	MILK	TMAT	GEST	CED
	-0.4	43	87	19	41		



Lot 54

55

SVF NEW DAY Y67

%Gelbvieh: 25% Reg #: 1199358
Blk Polled 1-30-11 Tattoo: Y67



SIRE: B/R NEW DAY 454

D Riverbend Mile High 3718 AN Bon View New Design 1407
A **SVF MS MILE HIGH W267 blk P** GAR Precision 1919
M SVF Ms Fullback 186L WAC Fullback 011G
SVF Ms Summit 16B

CV	FM
.	35.45

RE	.	MB	.
----	---	----	---

BW	86
Adj WW	654
Adj YW	1257

CE	BW	WW	YW	MILK	TMAT	GEST	CED
	0.2	39	92	23	43		

★Top 10% Feedlot Merit EPD.

If you are looking to add pounds at weaning in a thick, moderate, sound package, you will like these 454 sons.



Reference Sire

GAR-EGL PROTEGE'



Rito 6K6 of 4B20 6807 #
RITO 112 2536 RITO 6i6 #
 GAR Precision 2536

DHD Traveler 6807 #
 Rita 4B20 of OFB1 Bando
 GAR Precision 1680 #
 GAR Ext 2104

DHD Traveler 6807 #
LB 6807 ISABEL 339
 LB E31 Isabel 168

QAS Traveler 23-4 #
 Bemindful Maid DHD 0807 #
 Emulation 31 #
 LB Isabel Par 9146

ANGUS EPDs					Carcass EPDs		
CED	BW	WW	YW	Milk	MB	REA	FT
5	1.2	69	120	20	+64	+74	+001

\$Values

\$W	\$F	\$G	\$B
+40.64	+56.14	+38.39	+81.64

Protege is the #1 Sire Alliance winner with a \$92.35 Total Porfit Index. He ranks in the top 1% for progeny proven efficiency with a +21.80 Efficiency Index based on +.16 ADG and -.07 Intake EPDs. Back by a tremendous cow family with excellent production records along with added fleshing ability and udder quality. Continues to improve for BW EPD offering a very unique combination of low birth weight, high yearling performance and moderate yearling height.

ANGUS -- PROTEGE' sons

56

SVF PROTEGE Y248

Angus Reg. #: 17094455
 February 19, 2011 Tattoo: Y248



SIRE: GAR-EGL PROTEGE

D SAV Final Answer 0035 # Sitz Traveler 8180
 A **MISSION BLKBIRD 5937 9834** SAV Emulous 8145
 M Mission Blackbird 5937 Mission High Prime 463 C63
 Mission Blackbird 4651 #

\$Wean	\$Fdlot	\$Grid	\$Beef
+35.15	+46.21	+30.98	+69.89

BW	65
Adj WW	730
Adj YW	1287

EPDs					Carcass EPDs		
CED	BW	WW	YW	Milk	MBL	RE	FT
8	0	65	110	23	.54	.40	.011

57

SVF PROTEGE Y188

Angus Reg. #: 17094453
 February 12, 2011 Tattoo: Y188



SIRE: GAR-EGL PROTEGE

D SAV Final Answer 0035 # Sitz Traveler 8180 #
 A **SVF MS ANSWER W63** SAV Emulous 8145
 M SVF New Design 221N Lyons New Design 0103
 SVF Ms Krugerrand 21H

\$Wean	\$Fdlot	\$Grid	\$Beef
+31.41	+46.66	+31.50	+71.48

BW	80
Adj WW	749
Adj YW	1288

EPDs					Carcass EPDs		
CED	BW	WW	YW	Milk	MBL	RE	FT
4	2.2	64	110	25	.57	.44	.016

★Recommended for heifers or cows.

Protege's are efficient high gaining cattle.



Lot 56



Lot 57

A+PLUSBALANCER -- PROTEGE' sons

GAR-EGL PROTEGE' BALANCER EPDs

CE	BW	WW	YW	MILK	TMAT	GEST	CED
109	-1.7	56	115	18	46	-0.8	103

CARCASS EPDs

MB	REA	DtF	CW	CV	FM
.14	.16	3.1	27	42.02	50.32

BULLS ARE NOT CREEP FED
The weaning weights reflect the productivity of their dams.

62

SVF PROTEGE Y185

%Gelbvieh: 3% Reg #: 1199001
Blk Polled 2-11-11 Tattoo: Y185



SIRE: GAR-EGL PROTEGE'

D Harb Pendleton 765 JH AN SAV Final Answer 0035
A SVF MS PENDLETON W39 blk P Harb Black Lady 375 JH
M SVF Ms Predestined T181 GAR Predestined AN
SVF Ms Pinnacle 176P

CV	FM	RE	.14	MB	.17	BW	76
42.14	43.43					Adj WW	780
						Adj YW	1416

CE	BW	WW	YW	MILK	TMAT	GEST	CED
	-1.0	52	112	22	48	.	

★Outstanding numbers and eye appeal.

63

SVF PROTEGE Y123

%Gelbvieh: 6% Reg #: 1198975
Blk Polled 2-6-11 Tattoo: Y123



SIRE: GAR-EGL PROTEGE'

D GAR Predestined AN B/R New Design 036
A SVF PREDESTINED T161 blk P GAR Ext 4206
M SVF Ms Bushwacker 193M RP 3rd Bushwacker AN
SVF Ms Cocoa 30H

CV	FM	RE	.11	MB	.20	BW	87
43.49	40.78					Adj WW	760
						Adj YW	1357

CE	BW	WW	YW	MILK	TMAT	GEST	CED
110	0.3	52	105	21	47	-1.3	104

★Top numbers...stout and good!

Protege's progeny are efficient high gaining cattle.



Lot 62



Lot 63

SPECIAL DRAWING SALE DAY

We will hold a drawing on sale day before the auction begins for two \$300 certificates that will be good during the auction on a bull that you are the winning bidder on. You have to be registered to bid and be at the auction to win.

VOLUME DISCOUNT

\$100 Discount off third bull purchased and \$100 off each additional bull.

Angus Reference Sire

SVF PROTEGE' W237

Rito 112 of 2536 Rito 616 #
GAR-EGL PROTEGE'
 LB 6807 Isabel 339

Rito 616 of 4B20 6807 #
 GAR Precision 2536
 DHD Traveler 6807 #
 LB E31 Isabel 168 #

B/R New Design 036 #
SVF MS NEW DESIGN 21K
 SVF Ms Scotch Cap 120H

VDAR New Trend 315 #
 B/R Blackcap Empress 76
 RR Scotchcap 9440 #
 SVF DV 66D

ANGUS EPDs

Carcass EPDs

CED	BW	WW	YW	Milk	MB	REA	FT
5	2.0	60	110	25	+.57	+.42	+.013

\$Values

\$W	\$F	\$G	\$B
+28.55	+48.45	+30.16	+74.76

BALANCER EPDs

CE	BW	WW	YW	MILK	TMAT	GEST	CED
112	-2.6	55	115	20	48	-1.4	104

CARCASS EPDs

MB	REA	DtF	CW	CV	FM
.22	.06	4.0	20	44.22	50.90

Sire of Lots 61, 64, and 66.



Looking at bulls prior to the sale starting



A+PLUSBALANCER SVF PROTEGE' W237 sons (Lots 64 & 66)

64

SVF PROTEGE Y7

%Gelbvieh: 13% Reg #: 1199350
 Blk Polled 1-18-11 Tattoo: Y7



SIRE: SVF PROTEGE' W237

D Woodhill Foresight AN Papa Forte 1921
 A **SVF MS FORESIGHT U112 blk P** Bon View Gammer 85
 M SVF Ms BB 15L GKT Boo Boo 155E
 SVF Black Fortune 181J

CV	FM	RE	MB	BW	89
.	39.77	.	.	Adj WW	721
				Adj YW	1378

CE	BW	WW	YW	MILK	TMAT	GEST	CED
	-0.3	44	98	20	42	.	

★Outstanding bull.



Lot 64

66

SVF PROTEGE Y280

%Gelbvieh: 3% Reg #: 1199355
 Blk Polled 2-24-11 Tattoo: Y280



SIRE: SVF PROTEGE' W237

D SVF New Design 180N AN Bon View New Design 1407
 A **SVF DESIGN 180N T254 blk P** Ms Scotch 1483 119G
 M SVF Ms Freightliner 182P SVF Freightliner 181L
 SVF Ms Walker 86M

CV	FM	RE	MB	BW	68
.	32.35	.	.	Adj WW	685
				Adj YW	1222

CE	BW	WW	YW	MILK	TMAT	GEST	CED
	-4.0	42	92	18	39	.	

★Excellent heifer bull.

67

SVF PROTEGE Y163

%Gelbvieh: 13% Reg #: 1198959
 Blk Polled 2-9-11 Tattoo: Y163



SIRE: GAR-EGL PROTEGE'

D SCC New Design Ext 974 AN B/R New Design 036
 A **SVF MS DESIGN 27P blk P** SCC Queen Ext 405
 M SVF Ms Walker 145M SVF Walker 82K AN
 SVF Ms Black BB 64J

CV	FM	RE	MB	BW	84
45.36	44.42	.15	.20	Adj WW	654
				Adj YW	1311

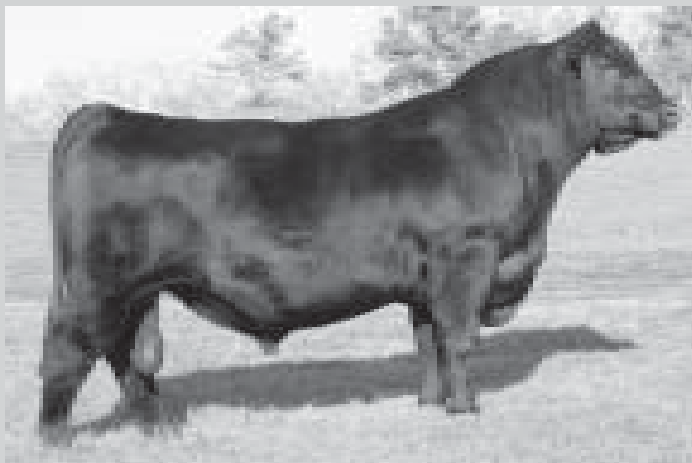
CE	BW	WW	YW	MILK	TMAT	GEST	CED
109	-0.6	42	99	22	43	-1.0	103

★Good performance bull here.

★Top 1% CV and FM EPDs.

Angus Reference Sire

WERNER WAR PARTY 2417



Connealy Lead On #
CONNEALY ONWARD
 Altune of Conanga 6104

Connealy Leadtime #
 Eligence Plus of Conanga
 GAR Traveler 1489 #
 Avalong 1418 of Conanga 6276

BAR Ext Traveler 205 #
BAAR USA LADY JAYE 489
 Cra Lady Jaye 608 498 S Easy

N Bar Emulation EXT #7
 BAR Queen Traveler 3015 #
 GAR Sleep Easy 1009 #
 HHF 917 Lady 975 498

ANGUS EPDs					Carcass EPDs		
CED	BW	WW	YW	Milk	MB	REA	FT
10	1.7	67	128	29	+51	+80	+009

\$Values

\$W	\$F	\$G	\$B
+38.87	+66.89	+33.66	+81.59

War Party combines a stylish appearance, impressive performance and extra value like few bulls can. He's backed by real cow power from a full-sib to Bextor and he sires extra length and pounds in an eye-appealing, structurally-complete profile. Study his CED, growth and combination of \$W and \$B--there aren't many like him.

ANGUS -- WAR PARTY sons

68

SVF WAR PARTY Y180

Angus Reg. #: 17096146
 February 10, 2011 Tattoo: Y180



SIRE: WERNER WAR PARTY 2417

D JLS Shear Force 6023
SVF MS SF 6023 U328
 M SVF Ms New Design 273N

GT Shear Force
 DS Miss Genevette 0119
 SCC New Design Ext 974
 SVF Ms Ambush 5B

\$Wean	\$Fdot	\$Grid	\$Beef	BW	71
+29.62	+36.80	+30.99	+66.60	Adj WW	655
				Adj YW	1177

EPDs				Carcass EPDs			
CED	BW	WW	YW	Milk	MBL	RE	FT
8	1.0	53	97	25	.56	.45	.026

★Recommended for heifers or cows.



Lot 68

69

SVF WAR PARTY Y107

Angus Reg. #: 17096150
 February 5, 2011 Tattoo: Y107



SIRE: WERNER WAR PARTY 2417

D Mytty In Focus #
SVF MS IN FOCUS S6
 M SVF Ms Design 13P

SAF Focus of ER #
 Mytty Countess 906
 SCC New Design Ext 974
 SVF Ms Buschwacker 172M

\$Wean	\$Fdot	\$Grid	\$Beef	BW	59
+34.48	+49.12	+33.16	+74.09	Adj WW	693
				Adj YW	1269

EPDs				Carcass EPDs			
CED	BW	WW	YW	Milk	MBL	RE	FT
15	-2.2	61	111	28	.61	.42	.009

★Recommended for heifers or cows.



Lot 69

A+PLUSBALANCER -- WAR PARTY Sons

71

SVF WAR PARTY Y145

%Gelbvieh: 25% Reg #: 1199346
Blk Polled 2-7-11 Tattoo: Y145



SIRE: WERNER WAR PARTY 2417

D BAG Mr Nagurski 79R Nord Nagurski M142J
A SVF T292 blk P BAG Miss DP Lilly 97L
M SVF Ms Design 167P AN SCC New Design Ext 974
Ms Latigo 142G

CV	FM
.	45.34

RE	MB
.	.

BW	80
Adj WW	712
Adj YW	1344

CE	BW	WW	YW	MILK	TMAT	GEST	CED
.	-1.0	52	108	18	44	.	.

- ★Soggy deep bodied...Easy fleshing bull.
- ★Top 1% Feedlot Merit.



Lot 71

72

SVF WAR PARTY Y156

%Gelbvieh: 50% Reg #: 1199345
Blk Polled 2-8-11 Tattoo: Y156



SIRE: WERNER WAR PARTY 2417

D GKT Boo Boo 144E FHG Flying H Cadillac 184C
A SVF MS BLACK BB 17J blk P CCD X55
M SVF Ms Ky 74G BAG Kayla's Black Cat 117B
SVF Ms Magnum 72E

CV	FM
.	32.32

RE	MB
.	.

BW	87
Adj WW	689
Adj YW	1235

CE	BW	WW	YW	MILK	TMAT	GEST	CED
.	-0.2	47	96	22	45	.	.

- ★Dam has been a top producer for 12 years.
- ★Top 15% Feedlot Merit.
- ★Good Performance bull here.

WAR PARTY BALANCER EPDs

CE	BW	WW	YW	MILK	TMAT	GEST	CED
110	-2.9	59	129	23	53	-1.3	102

CARCASS EPDs

MB	REA	DtF	CW	CV	FM
.19	.13	3.5	15	39.37	67.93

War Party combines a stylish appearance, impressive performance and extra value like few bulls can. He's backed by real cow power from a full-sib to Bextor and he sires extra length and pounds in an eye-appealing, structurally-complete profile. Study his CED and growth.

73

SVF B WAR PARTY Y72

%Gelbvieh: 9.5% Reg #: 1199348
Blk Polled 1-31-11 Tattoo: Y72



SIRE: WERNER WAR PARTY 2417

D Dr J Analyst M250 AN BCC Bushwacker 41-93
A SVF MS ANALYST W190 blk P GAR Precision 706
M SVF Ms In Focus S92 Mytty In Focus AN
SVF Ms Cherokee 74M red

CV	FM
.	45.46

RE	MB
.	.

BW	85
Adj WW	674
Adj YW	1280

CE	BW	WW	YW	MILK	TMAT	GEST	CED
.	-1.1	45	103	20	42	.	.

- ★Top 4% Yearling EPD.
- ★Top 1% Feedlot Merit EPD.

74

SVF B WAR PARTY Y133

%Gelbvieh: 13% Reg #: 1199347
Blk Polled 2-7-11 Tattoo: Y133



SIRE: WERNER WAR PARTY 2417

D SVF New Design S309 KM New Design 88A AN
A SVF MS ND S309 U377 blk P SVF Ms Black Cocoa 270J
M SVF Ms Bushwacker 48L AN RP 3rd Bushwacker
Ms Kruggerrand 56G

CV	FM
.	37.32

RE	MB
.	.

BW	75
Adj WW	655
Adj YW	1181

CE	BW	WW	YW	MILK	TMAT	GEST	CED
.	-2.0	43	96	22	44	.	.

- ★Recommended for heifers.
- ★Top 10% Feedlot Merit EPD.

Angus Reference Sire

R/M IRONSTONE 4047



GAR Precision 1680 #
CA FUTURE DIRECTION 5321 #
 CA Miss Power Fix 308

Tehama Bando 155 #
 9J9 GAR 856
 SAF Power Fix #
 CA Lady Eight 1015

B/R New Design 323 #
B/R RUBY OF TIFFANY 5144
 B/R Ruby of Tiffany 346

B/R New Design 036 #
 B/R Ruby of Tiffany 155
 PS Heritage 505
 B/R Ruby of Tiffany

ANGUS EPDs

CED	BW	WW	YW	Milk	MB	REA	FT
-1	4.1	64	105	24	+.84	+.89	+.001

Carcass EPDs

\$Values

\$W	\$F	\$G	\$B
+34.56	+40.96	+47.46	+72.77

Ironstone ranks #1 among all main list sires in the Spring 2011 Summary for combined \$W and \$B. Ironstone will add value by siring cattle that look good, weigh up, and generate premiums on the rail.

ANGUS -- IRONSTONE sons

75

SVF IRONSTONE Y210

Angus Reg. #: 17094579
 February 13, 2011 Tattoo: Y210



SIRE: R/M IRONSTONE 4047

D SCC New Design Ext 974
 A **SVF MS ND 974 U381**
 M SVF Bon Design 56M ET

B/R New Design 036 #
 SCC Queen Ext 405
 Bon View New Design 878 #
 SVF Ms Dividend 5E #

\$Wean	\$Fdot	\$Grid	\$Beef
+30.39	+34.60	+38.24	+67.59

BW	78
Adj WW	683
Adj YW	1269

EPDs					Carcass EPDs		
CED	BW	WW	YW	Milk	MBL	RE	FT
5	1.3	53	95	27	.54	.68	-.012

★Recommended for heifers or cows.



Lot 75

76

SVF B IRONSTONE Y229

Angus Reg. #: 17094578
 February 15, 2011 Tattoo: Y229



SIRE: R/M IRONSTONE 4047

D Dr J Analyst M250
 A **SVF MS ANALYST U148**
 M SVF Ms Future Direction R224

BCC Bushwacker 41-93 #
 GAR Precision 706
 KM Future Direction 43
 Ms Kruggerand 61G

\$Wean	\$Fdot	\$Grid	\$Beef
+26.21	+43.15	+42.86	+64.30

BW	79
Adj WW	673
Adj YW	1217

EPDs					Carcass EPDs		
CED	BW	WW	YW	Milk	MBL	RE	FT
1	3.4	59	105	24	.70	.61	-.006

★Top 3% \$Grid EPD.

★Top 20% \$Beef EPD.



Lot 76

77

SVF IRONSTONE Y192

Angus Reg. #: 17094582
February 12, 2011 Tattoo: Y192



SIRE: R/M IRONSTONE 4047

D Nichols Extra H6 # N Bar Emulation Ext #
A **SVF MS EXTRA 408P** Nichols Eileen May F261
M Ms Fortune 155G Minerts Fortune 2000 #
SVF Ms Ambush 8B

\$Wean	\$Fdlot	\$Grid	\$Beef	BW	81
+30.17	+27.97	+36.01	+52.16	Adj WW	680
				Adj YW	1141

EPDs					Carcass EPDs		
CED	BW	WW	YW	Milk	MBL	RE	FT
1	3.1	56	90	23	.51	.37	.013

78

SVF IRONSTONE Y96

Angus Reg. #: 17094580
February 5, 2011 Tattoo: Y96



SIRE: R/M IRONSTONE 4047

D Mytty In Focus # SAF Focus of ER #
A **SVF MS IN FOCUS T70** Mytty Countess 906
M SVF SG 129D Sedgwicks Dividend 8081
Blacktop Eileen 259 #

\$Wean	\$Fdlot	\$Grid	\$Beef	BW	76
+30.59	+26.85	+32.85	+51.74	Adj WW	667
				Adj YW	1174

EPDs					Carcass EPDs		
CED	BW	WW	YW	Milk	MBL	RE	FT
4	1.7	51	87	24	.53	.16	.001

A+PLUSBALANCER -- IRONSTONE Sons

80

SVF IRONSTONE Y216

%Gelbvieh: 25% Reg #: 1198990
Blk Polled 2-14-11 Tattoo: Y216



SIRE: R/M IRONSTONE 4047

D DCG Dusty L66 GKT Dusty 16J
A **SVF MS DUSTY 269P blk P** DCG Miss Ellsworth G24
M Ms Scotch 1483 34G AN RR 9440 Scotch Cap 1483
Molitor Caena Mignonne 8287

CV	FM	RE	.22	MB	.18	BW	83
41.35	21.86					Adj WW	729
						Adj YW	1270

CE	BW	WW	YW	MILK	TMAT	GEST	CED
	0.1	47	88	17	40		

★Top 3% Carcass Value EPD.



Lot 80

81

SVF IRONSTONE Y206

%Gelbvieh: 13% Reg #: 1198971
Blk Polled 2-12-11 Tattoo: Y206



SIRE: R/M IRONSTONE 4047

D Nichols Extra H6 AN N Bar Emulation Ext
A **SVF MS EXTRA 153P blk P** Nichols Eileen May F261
M SVF Ms Black BB 56J GKT Boo Boo 155E
SVF Ms Ky 66G

CV	FM	RE	.25	MB	.21	BW	80
45.17	31.91					Adj WW	672
						Adj YW	1281

CE	BW	WW	YW	MILK	TMAT	GEST	CED
	-0.6	40	87	20	40		

★Top 2% Carcass Value EPD.

IRONSTONE BALANCER EPDs							
CE	BW	WW	YW	MILK	TMAT	GEST	CED
	-0.4	51	98	18	44		
CARCASS EPDs							
MB	REA	DtF	CW	CV	FM		
.24	.21	2.9	25	49.08	30.58		

82

SVF IRONSTONE Y254

%Gelbvieh: 50% Reg #: 1199362
Blk Polled 2-21-11 Tattoo: Y254



SIRE: R/M IRONSTONE 4047

D WAC Fullback 011G KCF Bennett Anchor B227
A **SVF MS Fullback 186L blk P** WAC Ms Otis 21-038E
M SVF Ms Summit 16B HHF Polled Summit 648U
SVF Ms Gel Gal W21

CV	FM	RE	.02	MB	.15	BW	88
30.23	23.70					Adj WW	676
						Adj YW	1247

CE	BW	WW	YW	MILK	TMAT	GEST	CED
	1.7	46	87	18	41		

★These Ironstone sons are consistent performers.



Lot 82

83

SVF IRONSTONE Y217

%Gelbvieh: 25% Reg #: 1198999
 Blk Scured 2-14-11 Tattoo: Y217



SIRE: R/M IRONSTONE 4047

D Bfck Cherokee Cnyn 4912 AR VC Buf Crk Chf 824-1658
 A **SVF CHEROKEE CNYN 3N red P** MRM MRM 1431 8611 9109
 M SVF Ms BB 260L SVF 77J
 SVF Reba

CV	FM
43.84	23.44

RE	MB
.30	.20

BW	85
Adj WW	643
Adj YW	1146

CE	BW	WW	YW	MILK	TMAT	GEST	CED
	-0.3	43	80	16	37		



Videos were playing before the sale

Angus Reference Sire

HA PROGRAM 5652



CA Future Direction 5321 #
HA FUTURE DIRECTION 3540
 HA 4167 Lady 1013

GAR Precision 1680 #
 CA Miss Power Fix 308
 RR Ultra Hero 7401 #
 HA Rito Lady 4167

Sitz Alliance 6595 #
HA BLACKCAP LADY 2782
 HA Blackcap Lady 5166 #

Sitz Traveler 8180 #
 Sitz Barbaramere Jet 2698 #
 Sitz Rainmaker 8812
 HA Blackcap Lady 319

ANGUS EPDs

Carcass EPDs

CED	BW	WW	YW	Milk	MB	REA	FT
7	0.8	62	110	24	+43	+67	-.001

\$Values

\$W	\$F	\$G	\$B
+36.98	+47.55	+32.19	+70.87

Program is a low birth weight bull that ranks near the top of the breed for docility. Unique, heavy muscled calving ease bull with a 102 progeny rib eye area ratio. He has a balanced trait 'no holes' EPD profile that will complement a wide range of pedigrees.

ANGUS -- PROGRAM Son

84

SVF PROGRAM Y278

Angus Reg. #: 17094586
 February 24, 2011 Tattoo: Y278



SIRE: HA PROGRAM 5652

D Connealy Lead On # Connealy Leadtime #
 A **SVF MS LEADON 9P** Eligence Plus of Conanga
 M SVF Ambush 80M Rockn D Ambush 1531 #
 SVF SG 1D

\$Wean	\$Fdot	\$Grid	\$Beef
+32.03	+31.35	+36.01	+64.09

BW	70
Adj WW	676
Adj YW	1207

EPDs					Carcass EPDs		
CED	BW	WW	YW	Milk	MBL	RE	FT
7	0.6	53	92	25	.51	.37	-.033

★Recommended for large framed heifers or cows.



Lot 84

PROGRAM BALANCER EPDs

CE	BW	WW	YW	MILK	TMAT	GEST	CED
	-1.8	48	107	20	44		

CARCASS EPDs

MB	REA	DtF	CW	CV	FM
.19	.12	1.8	15	37.21	48.20

Program is a low birth weight bull that ranks near the top of the breed for docility. Unique, heavy muscled calving ease bull with a 102 progeny rib eye area ratio.

A+PLUSBALANCER PROGRAM sons

85

SVF PROGRAM Y314

%Gelbvieh: 25% Reg #: 1198992
Blk Polled 2-27-11 Tattoo: Y314



SIRE: HA PROGRAM 5652

D SVF 2V1 R50 AN Rito 2V1 of 2536 1407
A SVF MS 2V1 R50 T346 blk P Ms Fortune 36G
M SVF Ms Black BB 64J GKT Boo Boo 155E
SVF Ms Cocoa 117G

CV	FM	RE	.12	MB	.22	BW	80
34.71	38.80					Adj WW	742
						Adj YW	1329

CE	BW	WW	YW	MILK	TMAT	GEST	CED
	-0.6	48	101	20	44		

★Top 10% Yearling weight EPD.

★Excellent growth bull.



Lot 85

86

SVF PROGRAM Y262

%Gelbvieh: 13% Reg #: 1199363
Blk Polled 2-23-11 Tattoo: Y262



SIRE: HA PROGRAM 5652

D GAR Retail Product AN GAR Precision 1680
A SVF MS PRODUCT R122 blk P GAR Ext 4927
M SVF Ms Dusty 151M GKT Dusty 16J
SVF Ms Black Cocoa 243J

CV	FM	RE	.19	MB	.17	BW	78
35.24	44.81					Adj WW	676
						Adj YW	1284

CE	BW	WW	YW	MILK	TMAT	GEST	CED
	-1.0	43	99	20	41		

★Top 2% Feedlot Merit.

★Top 10% Yearling weight EPD.



Lot 86



The table rock in our calving pasture.

87

SVF PROGRAM Y328

%Gelbvieh: 25% Reg #: 1199353
Blk Polled 3-1-11 Tattoo: Y328



SIRE: HA PROGRAM 5652

D SVF Nord 109P Nord Nagurski M142J
A SVF T235 blk P SVF Ms Black Cocoa 47J
M SVF Ms Prime 60P AN DCC Rito Prime 115
SVF Ms Dividend 161F

CV	FM	RE	.16	MB	.15	BW	81
34.79	45.08					Adj WW	668
						Adj YW	1182

CE	BW	WW	YW	MILK	TMAT	GEST	CED
	-0.5	47	97	17	41		

★Top 1% Feedlot Merit.

ANGUS -- PREDOMINANT Sons



Angus Reference Sire

SAV 004 PREDOMINANT 4438

Sitz Traveler 8180 #
SAV 8180 TRAVELER 004 #
 Boyd Forever Lady 8003

GDAR Traveler 71 #
 Sitz Everelda Entense 1137
 AAR New Trend #
 SVF Forever Lady 57D

SAF 598 Bando 5175 #
SAV Emblynette 1182
 SAV Emblynette 7319 #

Bon View Bando 598 #
 SAF Royal Lass 1002
 SAV Ext Emulation 5040
 SAV Emblynette Diamond 5369

ANGUS EPDs

Carcass EPDs

CED	BW	WW	YW	Milk	MB	REA	FT
8	2.3	59	99	22	+.43	+.23	.049

\$Values

\$W	\$F	\$G	\$B
+33.87	+36.44	+14.01	+61.98

Popular EDGE Graduate, Predominant is an 004 son out of the much admired 5175 females from SAV. The leadoff bull of one of the strongest embryo flushes in SAV history, he recorded the heaviest weaning and yearling weights of his flush. His daughters have good depth of rib, good capacity and excellent teat placement and are making excellent replacements. His progeny are heavily muscled with moderate frames and are easy fleshing.

ANGUS -- PREDOMINANT sons

88

SVF PREDOMINANT Y302

Angus Reg. #: 17092960
 February 27, 2011 Tatoo: Y302



SIRE: SAV 004 PREDOMINANT 4438

D GAR Retail Product #
A SVF MS RET PRODUCT S124
 M SVF Ms New Design 515N

GAR Precision 1680 #
 GAR Ext 4927
 Bon View New Design 1407 #
 Ms Kruggerand 54K

\$Wean	\$Fdot	\$Grid	\$Beef	BW	69
+28.48	+39.01	+23.95	+66.45	Adj WW	693
				Adj YW	1267

EPDs					Carcass EPDs		
CED	BW	WW	YW	Milk	MBL	RE	FT
9	1.3	53	99	25	.39	.54	.030

89

SVF PREDOMINANT Y368

Angus Reg. #: 17092961
 March 6, 2011 Tatoo: Y368



SIRE: SAV 004 PREDOMINANT 4438

D B/R New Design 036 #
A SVF MS DESIGN 119K
 M SVF Ms Gunner 37A #

VDAR New Trend 315 #
 B/R Blackcap Empress 76
 SVF Gunner Y73
 Kruegers First Lady 2001 #

\$Wean	\$Fdot	\$Grid	\$Beef	BW	83
+27.83	+29.21	+16.29	+55.78	Adj WW	724
				Adj YW	1265

EPDs					Carcass EPDs		
CED	BW	WW	YW	Milk	MBL	RE	FT
3	3.1	53	90	24	.29	.11	.016

Two excellent Predominant sons here



Lot 88



Lot 89

A+PLUSBALANCER -- PREDOMINANT son

90 SVF PREDOMINANT Y331

%Gelbvieh: 25% Reg #: 1198988
Blk Polled 3-3-11 Tattoo: Y331



PREDOMINANT BALANCER EPDs

CE	BW	WW	YW	MILK	TMAT	GEST	CED
109	-0.6	44	99	21	43	-0.8	102

CARCASS EPDs

MB	REA	DtF	CW	CV	FM
.14	.00	0.8	8	23.44	40.95

SIRE: SAV 004 PREDOMINANT 4438

D KM Traveler 60A AN Alberda Traveler 416
A SVF MS TRAVELER 250P blk P KM Barb 315
M SVF Ms Fullback 166L WAC Fullback 011G
SVF Ms Cocoa 52H

CV	FM	RE	.00	MB	.14	BW	76
23.79	36.21					Adj WW	638
						Adj YW	1225

CE	BW	WW	YW	MILK	TMAT	GEST	CED
109	-0.7	39	88	21	40	-0.7	102

★Recommended for heifers or cows.



Angus Reference Sire

CONNEALY CONTRAST

Connealy Timeline #
CONNEALY DANNY BOY #
Energy of Conanga 4851

Connealy Dateline #
Fortune Conanga 6127 #
Hoff Heartland SC 456 #
Dividends Envy of Conanga #

Rito 616 of 4B20 6807 #
DORIS OF CONANGA 669 #
Date of Conanga 670B

DHD Traveler 6807 #
Rita 4B20 of OFB1 Bando
Sitz Alliance 6595 #
Date of Conanga 5680 #

ANGUS EPDs

Carcass EPDs

CED	BW	WW	YW	Milk	MB	REA	FT
13	-1.2	42	86	19	+.47	+.71	+.004

\$Values

\$W	\$F	\$G	\$B
+28.72	+29.49	+29.72	+78.14

Super attractive, heavy muscled and easy fleshing bull. Contrast is in top 2% for CE EPD with outstanding docility and added scrotal circumference.

Positive \$EN with moderate growth and milk to excel in lower input environments. Progeny are attractive, heavy muscled and easy fleshing.

He now ranks in the top 3% of the Angus breed for \$B.

ANGUS -- CONTRAST Son

91

SVF CONTRAST Y64

Angus Reg. #: 17094490
January 29, 2011 Tattoo: Y64



SIRE: CONNEALY CONTRAST

D GT Shear Force N Bar Prime Time D806 #
A SVF MS SHEAR FORCE W254 GT Siskin 106 #
M SVF Ms Rito Prime R58 DCC Rito Prime 115
SVF Ms Pinnacle 189N

\$Wean	\$Fdot	\$Grid	\$Beef	BW	74
+23.89	+39.63	+23.77	+67.56	Adj WW	671
				Adj YW	1265

EPDs

Carcass EPDs

CED	BW	WW	YW	Milk	MBL	RE	FT
4	1.7	49	98	21	.43	.52	.037

★Recommended for heifers or cows.



Lot 91

Angus Reference Sire

CONNEALY 5398 4624

Connealy Danny Boy #
CONNEALY DANNY 5398
Endova of Conanga 858

Connealy Timeline #
Energy of Conanga 4851
EGL Target 1148
Endive of Conanga 6860 #

Connealy Forefront #
PAULA PARTY CONANGA 721 #
Pollina of Conanga 719

Connealy Frontline #
Eileen Heartland Conanga 6443
Larks Canyon 74D4 #
Party of Conanga 4720

ANGUS EPDs

Carcass EPDs

CED	BW	WW	YW	Milk	MB	REA	FT
9	-1.3	60	108	18	+28	+57	+017

\$Values

\$W	\$F	\$G	\$B
+33.67	+46.14	+21.32	+66.56

BALANCER EPDs

CE	BW	WW	YW	MILK	TMAT	GEST	CED
	-2.9	50	108	14	39		

CARCASS EPDs

MB	REA	DtF	CW	CV	FM
.18	.17	1.2	18	39.67	47.17

Sire of Lots 92 and 95



Lot 93

A+PLUSBALANCER IMPRESSION 583B son

93

SVF B IMPRESS Y353

%Gelbvieh: 13% Reg #: 1199351
Blk Polled 3-1-11 Tattoo: Y353

SIRE: CONNEALY IMPRESSION 583B

D KCF Bennett Performer AN Hyline Right Time
A **SVF PERFORMER U120 blk P** KCF Miss 589 L182
M SVF Ms Balancer 264N SVF Krugerrand 33H AN
SVF Ms BB 35L

CV	FM	RE	MB	BW	75
.	45.34	.	.	Adj WW	723
				Adj YW	1374

CE	BW	WW	YW	MILK	TMAT	GEST	CED
	-3.0	46	104	20	43	.	

- ★Could be used on heifers or cows.
- ★Top 1% Feedlot Merit.
- ★Excellent spread bull.

ANGUS 5398 4624 son

92

SVF 4624 Y276

Angus Reg. #: 17083751
February 24, 2011 Tattoo: Y276



SIRE: CONNEALY 5398 4624

D Mytty In Focus # SAF Focus of ER #
A **SVF MS IN FOCUS S2** Mytty Countess 906 #
M SVF Ms Design 167P SCC New Design Ext 974
Ms Latigo 142G

\$Wean	\$Fdot	\$Grid	\$Beef
+30.24	+49.62	+30.37	+74.01

BW	80
Adj WW	721
Adj YW	1350

EPDs

Carcass EPDs

CED	BW	WW	YW	Milk	MBL	RE	FT
8	-0.1	60	111	21	.59	.45	.023

★Recommended for heifers or cows.



Lot 92

Angus Reference Sire

CONNEALY IMPRESSION 583B

Connealy Reflection
CONNEALY IMPRESSION
Pearl Pammy of Conanga 194

Bon View New Design 878 #
Happy Grill of Conanga 6260
Vermillion Dateline 7078 #
Pearl Jam of Conanga 6114

CA Future Direction 5321 #
ENERGEN OF CONANGA 825 1176
ENERGY OF CONANGA 4851

GAR Precision 1680 #
CA Miss Power Fix 308
Hoff Heartland SC 456 #
Dividends Envy of Conanga #

BALANCER EPDs

CE	BW	WW	YW	MILK	TMAT	GEST	CED
	-3.6	49	110	22	47		

CARCASS EPDs

MB	REA	DtF	CW	CV	FM
.	50.87

Angus Reference Sire
CONNEALY TOBIN 677E

BV New Design 208 #
CONNEALY TOBIN
Delia of Conanga 667

B/R New Design 036 #
Bon View Erica 443 #
CA Future Direction 5321 #
Deena of Conanga 668 #

Lemmon Newline C804 #
BLYN CONANGA 747 T901
Becka of Conanga 781 #

B/R New Design 036 #
White Fence Pride H1
SVF Hi Road #
Becky Bo of Conanga

BALANCER EPDs

CE	BW	WW	YW	MILK	TMAT	GEST	CED
	-2.4	42	92	29	50		

CARCASS EPDs

MB	REA	DtF	CW	CV	FM
.23	.10	3.9	16	40.77	32.80

A+PLUSBALANCER
5398 4624 son

95

SVF 4624 Y357

%Gelbvieh: 13% Reg #: 1198986
Blk Polled 3-4-11 Tattoo: Y357



SIRE: CONNEALY 5398 4624

D SVF Walker 52M AN SVF Walker 82K
A **SVF MS WALKER 229P blk P** Ms Scotch 1483 70G
M SVF Ms Las 184K SVF Latigo 99F AN
SVF 69A

CV	FM	RE	.10	MB	.16	BW	85
35.63	34.06					Adj WW	684
						Adj YW	1269

CE	BW	WW	YW	MILK	TMAT	GEST	CED
	-1.0	41	90	15	36	.	

A+PLUSBALANCER
TOBIN 677E son

94

SVF TOBIN Y293

%Gelbvieh: 38% Reg #: 1198962
Blk Polled 2-26-11 Tattoo: Y293



SIRE: CONNEALY TOBIN 677E

D GKT Boo Boo 155E FHG Flying H Cadillac 184C
A **SVF MS BLACK BB 56J blk P** CCD X55
M SVF Ms Ky 66G BAG Kayla's Black Cat 117B
1/2 blood

CV	FM	RE	.22	MB	.22	BW	70
37.48	18.62					Adj WW	664
						Adj YW	1169

CE	BW	WW	YW	MILK	TMAT	GEST	CED
	-2.0	37	73	25	43	.	



Lot 94

1/2 Blood Reference Sire
EGL W136 ET

Northern Exposure J171
NORTHERN WIND P068 ET
Olivia J811 ET

SS Traveler 6807 T510
EGL MISS T510 2190 AN
Egl 7418

Flying H Extra 150D
C111 ET
Bud 11G
Olive F025 ET

DHD Traveler 6807
SS Miss Hi Spade A114
TC Stockman 365
Eagle Pass 3322

BALANCER EPDs

CE	BW	WW	YW	MILK	TMAT	GEST	CED
110	0.6	39	74	15	35	0.5	102

CARCASS EPDs

MB	REA	DtF	CW	CV	FM
.12	.45	0.6	28	39.69	9.91

A+PLUSBALANCER
EGL W136 son

96

SVF EAGLE Y322

%Gelbvieh: 38% Reg #: 1198963
Blk Polled 2-28-11 Tattoo: Y322



SIRE: EGL W136 ET

D Rito 2V1 of 2536 1407 AN Bon View New Design 1407
A **SVF MS 2V1 R90 blk P** GAR Precision 2536
M SVF Ot 262L SVF Mr Ot 111F
SVF Ms 365 96H

CV	FM	RE	.31	MB	.19	BW	91
45.92	25.58					Adj WW	705
						Adj YW	1262

CE	BW	WW	YW	MILK	TMAT	GEST	CED
108	2.1	49	92	18	42	-0.2	102

★ Top 1% Carcass Value EPD.

★ Top 20% Yearling weight EPD.

A+PLUSBALANCER -- EGL W585 Sons

1/2 Blood Reference Sire EGL W585

Bon View New Design 208
TC TOTAL 410 AN
 TC Erica Eileen 2047

B/R New Design 036
 Bon View Erica 443
 Twin Valley Precision E161
 TC Erica Eileen 5116

Egl Executive J159
EGL P244
 Egl K784

Flying H Extra 150D
 F1281
 Bar GT Paradigm 2H ET
 H1176 ET

BALANCER EPDs

CE	BW	WW	YW	MILK	TMAT	GEST	CED
111	-0.9	40	90	21	41	-1.2	104

CARCASS EPDs

MB	REA	DtF	CW	CV	FM
.18	.18	5.3	17	38.49	32.42

Number 2 bull for Feed Efficiency at the 2010 Eagle Pass sale.



Curious cows in calving pasture

97

SVF TOTAL Y338

%Gelbvieh: 25% Reg #: 1199360
 Blk Polled 3-4-11 Tattoo: Y338



SIRE: EGL W585

D GAR Retail Product
 A **SVF RETAIL PRODUCT S169 AN**
 M Ms New Design 21K

GAR Precision 1680
 GAR Ext 4927
 B/R New Design 036
 SVF Ms Scotch Cap 120H

CV	FM	RE	.18	MB	.18	BW	82
38.50	32.42					Adj WW	717
						Adj YW	1369

CE	BW	WW	YW	MILK	TMAT	GEST	CED
111	-0.9	40	90	21	41	-1.2	104

★Long bodied growth bull that will add pounds to a calf crop.



Lot 97

98

SVF TOTAL Y306

%Gelbvieh: 38% Reg #: 1198996
 Blk Polled 2-27-11 Tattoo: Y306



SIRE: EGL W585

D E&B National 536 AN
 A **SVF NATIONAL 536 T407 blk P**
 M SVF Ms Black Cocoa 296J

ALC National T60N
 E&B Empress Pride 2108
 SVF Mr Cocoa 45G
 SVF SG 1D

CV	FM	RE	.20	MB	.15	BW	88
41.62	24.67					Adj WW	707
						Adj YW	1299

CE	BW	WW	YW	MILK	TMAT	GEST	CED
	0.9	41	86	19	39		

★Excellent growth with a 700+ WW and a 1300 lb YW.

99

SVF TOTAL Y270

%Gelbvieh: 25% Reg #: 1199359
 Blk Polled 2-23-11 Tattoo: Y270



SIRE: EGL W585

D Mytty In Focus
 A **SVF MS IN FOCUS S1 AN**
 M SVF Ms Bushwacker 49L

SAF Focus of ER
 Mytty Countess 906
 RP 3rd Bushwacker
 Ms Krugerrand 56G

CV	FM	RE	.15	MB	.13	BW	76
31.24	23.52					Adj WW	637
						Adj YW	1220

CE	BW	WW	YW	MILK	TMAT	GEST	CED
113	-3.0	39	83	18	38	-1.6	105

★Could be used on heifers

Total W585 was the number 2 bull overall in Feed Efficiency at Eagle Pass in 2010.

100

SVF TOTAL Y265

%Gelbvieh: 25% Reg #: 1199361
Blk Polled 2-23-11 Tattoo: Y265



SIRE: EGL W585

D SAV 5175 Bando 0699
A **SVF MS BANDO S194 AN**
M SVF DV 57D

SAF 598 Bando 5175
LLA Georgina 419
TC Dividend 963
SVF Ms Ambush 5B

CV	FM	RE	.10	MB	.15	BW	85
28.08	17.35					Adj WW	638
						Adj YW	1138

CE	BW	WW	YW	MILK	TMAT	GEST	CED
111	-0.7	36	77	19	37	-1.1	103

Angus Reference Sire

CONNEALY ANSWER 64A

Sitz Traveler 8180 #
SAV FINAL ANSWER 0035 #
SAV Emulous 8145

GDAR Traveler 71 #
Sitz Everelda Entense 1137
Bon View Bando 598 #
SAV Sky Emulous 2124

Wulffs Ext 6106 #
BLK CY OF CONANGA 203 9-34
Blk Crane of Conanga 204

N Bar Emulation EXT #
Wulffs Erica Dianna C116
Connealy Forefront #
Blk Cala of Conanga 5203 #

ANGUS EPDs

Carcass EPDs

CED	BW	WW	YW	Milk	MB	REA	FT
11	-0.6	56	105	25	+44	+33	+023

\$Values

\$W	\$F	\$G	\$B
+31.37	+44.48	+26.03	+61.98

101

SVF ANSWER 64A Y325

Angus Reg. #: COMMERCIAL
March 1, 2011 Tattoo: Y325



SIRE: CONNEALY ANSWER 64A

D Riverbend Mile High 3718
A **SVF MS HIGH U250**
M SVF Ms Retail Product U250

Bon View New Design 1407
GAR Precision 1919
GAR Retail Product
Ms New Design 21K

\$Wean	\$Fdot	\$Grid	\$Beef
+	+	+	+

BW	71
Adj WW	702
Adj YW	1241

EPDs					Carcass EPDs		
CED	BW	WW	YW	Milk	MBL	RE	FT
					.	.	.

- ★ This bull is not registered.
- ★ Can be used on heifers and is a soggy dude.



Lot 101



American Angus Association \$Values

Weaned Calf Value (\$W)

The newest index is the Weaned Calf \$ Value. \$W Quantifies four primary economic impact areas:

1. **Birth Weight** - birth weight influences on calf death losses related to dystocia, weaned calf crop percentage, and resulting revenue per cow.
2. **Weaning Weight** - direct growth impact on weaning weight revenue (pre-weaning growth and pounds of calf sold) and energy requirements and related costs necessary to support pre-weaning calf growth.
3. **Maternal Milk** - revenue from calf pre-weaning growth and pounds of calf sold as influenced by varying cow milk levels, and costs related to lactation energy requirements.
4. **Mature Cow Size** - expense adjustments are made for maintenance energy as related to differing mature cow size, including mathematical linkages between mature weight and yearling weight.

The impact areas are combined into a bio-economic value expressed in dollars per head assigned to Angus genetics from birth through weaning. Resources used to form the Wean Calf Value (W\$) include National Research Council (NRC), US Meat and Animal Research Center (USMARC), Cattle-Fax, SPA and university cow-calf budgets, and the American Angus Assoc. performance database.

Feedlot Value (\$F)

An index value expressed in dollars per head, is the expected average difference in future progeny performance of postweaning merit compared to progeny of other sires.

Grid Value (\$G)

An index value expressed in dollars per head, is the expected average difference in future progeny performance for carcass grid merit compared to progeny of other sires.

Beef Value (\$B)

Beef Value (B) facilitates what almost every beef breeder is already seeking--simultaneous multi--trait genetic selection for feedlot and carcass merit, based on dollars and cents. \$B represents the expected average dollar-per-head difference in the progeny postweaning performance and carcass value compared to progeny of other sires. The \$B value is comprised of two pieces: Feedlot \$Value (\$F) and Grid \$ Value (\$G). To align \$B with marketplace realities and appropriately value carcass weight in Angus cattle, the following factors are incorporated into the final calculations for \$B.

- ◆ \$B is not simply the sum of \$F and \$G
- ◆ Projected carcass weight and its value are calculated, along with production cost differences.
- ◆ \$B takes into consideration any discount for heavyweight carcasses.
- ◆ Final adjustments are made to prevent double-counting weight between feedlot and carcass segments.

The resulting \$B value is not designed to be driven by one factor such as quality, red meat yield, or weight. Instead, it is a dynamic result of the application of commercial market values to Angus genetics for both feedlot and carcass merit.

Spring Valley is selling Full Possession and 2/3 semen interest in all bulls in this offering.

Spring Valley will retain a 1/3 revenue sharing semen interest in all bulls selling unless otherwise stated.

You, the buyer, have total control of the bull and 100% of the salvage value belongs to you.

The reason for retaining this semen interest is simple. Many of these bulls have the individual performance, pedigree, EPDs and carcass merit to develop into outstanding sires, but the truly superior sires that we need to advance our program and provide a better product for you, our customers, are not being identified until later in life after progeny records increase their predictability. If and when we would like semen on any of these bulls, we would collect the semen in the off-breeding season at your convenience and our expense.

If you decide to collect semen for your own account the semen is 100% yours. The number of bulls on which a high volume of semen is sold is relatively small, but in the event semen sales develop on any of these bulls, we and you, as the bull owner, will share the net revenues. Over time, this will affect very few bulls.

We will be more than happy to visit with you and answer any questions you may have pertaining to the bulls offered in this sale.

American Angus EPDs

Percentile Breakdown Spring 2012 Current Sires

Top Pct	Production						Maternal				Carcass				\$Values						
	CED	BW	WW	YW	YH	SC	CEM	Milk	MW	MH	\$EN	CW	Marb	RE	Fat	\$W	\$F	\$G	\$QG	\$YG	\$B
1%	14	-3	70	122	1.2	1.84	14	35	95	1.4	33.83	46	1.02	0.85	-0.05	40.78	59.22	45.54	37.37	12.99	81.64
2%	13	-2.3	67	117	1.1	1.68	13	33	86	1.2	27.97	43	0.93	0.78	-0.043	38.72	54.53	43.68	35.88	12.21	78.66
3%	13	-1.8	65	114	1	1.58	13	32	81	1.1	24.54	41	0.87	0.73	-0.038	37.48	51.77	42.44	34.82	11.6	76.78
4%	12	-1.5	64	112	1	1.49	12	32	76	1	22.05	40	0.84	0.7	-0.034	36.5	49.62	41.51	34.02	11.14	75.32
5%	12	-1.3	63	110	0.9	1.43	12	31	73	1	20.05	39	0.81	0.67	-0.031	35.83	48.12	40.61	33.4	10.88	74.27
10%	11	-0.6	59	104	0.8	1.21	11	29	64	0.8	14.42	35	0.7	0.58	-0.022	33.53	42.9	37.38	31.15	9.53	70.09
15%	10	-0.1	56	100	0.7	1.06	11	28	57	0.7	11.06	32	0.63	0.52	-0.016	32.05	39.27	35	29.26	8.59	67.11
20%	9	0.3	54	97	0.7	0.94	10	27	53	0.7	8.52	30	0.58	0.46	-0.011	30.95	36.73	33.06	27.77	7.85	64.68
25%	8	0.6	53	94	0.6	0.84	10	26	49	0.6	6.61	28	0.54	0.42	-0.007	30.07	34.42	31.26	26.67	7.26	62.7
30%	8	0.9	51	92	0.6	0.76	9	25	45	0.6	4.96	27	0.5	0.38	-0.004	29.24	32.36	29.58	25.37	6.56	60.85
35%	7	1.2	50	90	0.5	0.68	9	24	41	0.5	3.49	25	0.46	0.34	-0.001	28.47	30.52	28.02	24	6.02	58.99
40%	7	1.4	48	88	0.5	0.61	9	23	38	0.5	2.03	24	0.43	0.31	0.002	27.78	28.73	26.53	22.98	5.41	57.3
45%	6	1.6	47	86	0.5	0.54	8	23	35	0.4	0.68	23	0.4	0.28	0.005	27.05	27.13	25.13	21.83	4.77	55.55
50%	6	1.8	46	84	0.4	0.47	8	22	32	0.4	-0.66	22	0.37	0.24	0.008	26.37	25.44	23.71	20.73	4.24	53.94
55%	5	2	45	82	0.4	0.4	7	21	29	0.3	-1.94	20	0.34	0.21	0.011	25.67	23.83	22.3	19.59	3.54	52.24
60%	4	2.3	43	80	0.3	0.34	7	20	26	0.3	-3.26	19	0.31	0.18	0.014	24.96	22.17	21.01	18.43	2.91	50.62
65%	4	2.5	42	77	0.3	0.28	7	20	22	0.3	-4.55	18	0.28	0.15	0.017	24.23	20.42	19.62	17.73	2.17	48.73
70%	3	2.7	41	75	0.2	0.21	6	19	19	0.2	-5.98	16	0.25	0.11	0.021	23.46	18.57	18.23	16.4	1.47	46.67
75%	3	3	39	73	0.2	0.13	6	18	14	0.1	-7.48	15	0.22	0.07	0.024	22.6	16.5	16.74	14.69	0.58	44.32
80%	2	3.3	37	70	0.1	0.05	5	17	10	0.1	-9.11	13	0.18	0.03	0.029	21.62	14.21	15.01	13.3	-0.51	41.63
85%	1	3.6	35	66	0.1	-0.1	4	15	4	0	-11.12	11	0.14	-0.01	0.034	20.4	11.39	13.08	11.57	-1.87	38.4
90%	0	4.1	32	61	0	-0.2	3	13	-3	-0.1	-13.61	8	0.1	-0.07	0.041	18.87	7.68	10.81	9.82	-3.66	33.67
95%	-2	4.7	27	52	-0.2	-0.4	2	11	-17	-0.3	-17.36	3	0.03	-0.16	0.052	16.34	1.17	7.38	6.53	-7.09	25.69
Avg	5	1.8	46	83	0.4	0.49	7	22	31	0.4	0.12	21	0.39	0.25	0.009	26.24	25.19	23.87	20.45	3.41	52.56

*Current Sires...at least one calf recorded in American Angus Association herd book within the past two years.

Keep in mind that all EPDs, including the \$VALUE EPDs, are across the entire breed. So, when we say a bull is in the top 30%, 10%, or top 1%, that is compared to the entire Angus breed.

American Gelbvieh Association

July 2011 International Cattle Evaluation--Gelbvieh Blended Breed Base Active Balancer Sires Percentile Breakdown

	CE	BW	WW	YW	MK	TM	GL	CED	SC	ST	CW	RE	MB	DtF	CV	FM
Average	109	-0.4	38	80	17	36	-1.1	102	0.3	3	14	0.13	0.12	3.1	18.09	19.88
Low	87	-7.5	10	39	-3	19	-3.7	93	-0.4	-4	-16	-0.39	-0.08	-11.3	-28.59	-8.68
High	122	6.6	66	116	33	54	1.9	109	1.3	9	41	0.76	0.40	11.6	55.98	61.12
Percentile Breakdown																
1%	118	-4.8	56	110	27	50	-2.9	108	1.2	7	35	0.57	0.27	-3.2	41.85	45.72
2%	117	-4.4	54	106	26	48	-2.7	107	1.0	7	33	0.50	0.26	-1.5	39.69	42.76
3%	116	-4.1	54	105	25	46	-2.6	106	0.9	7	32	0.45	0.25	-0.8	38.19	41.15
4%	116	-3.9	53	103	24	46	-2.5	106	0.8	7	30	0.43	0.24	-0.5	37.69	39.88
5%	115	-3.7	52	102	24	46	-2.3	106	0.8	7	29	0.40	0.23	-0.2	37.14	39.00
10%	114	-2.8	48	97	23	42	-2.0	105	0.7	6	25	0.34	0.21	0.5	32.69	34.63
15%	112	-2.3	46	93	21	42	-1.8	104	0.6	6	23	0.29	0.19	1.2	29.92	31.27
20%	112	-1.9	44	90	20	40	-1.7	104	0.5	5	21	0.25	0.18	1.4	27.50	28.54
25%	111	-1.6	43	88	20	39	-1.6	104	0.5	5	19	0.22	0.17	1.8	26.02	27.02
30%	111	-1.3	42	86	19	38	-1.5	103	0.4	4	18	0.20	0.16	2.1	24.81	25.50
35%	110	-1.0	41	84	18	38	-1.4	103	0.4	4	17	0.16	0.15	2.3	23.15	24.06
40%	110	-0.8	40	83	18	37	-1.3	103	0.3	3	15	0.14	0.13	2.5	22.10	22.30
45%	109	-0.6	39	81	17	36	-1.1	102	0.3	3	14	0.13	0.13	2.7	20.85	20.57
50%	109	-0.4	38	80	17	36	-1.0	102	0.2	2	13	0.11	0.12	3.0	19.40	19.33
55%	108	-0.2	37	78	16	34	-0.9	102	0.2	2	12	0.09	0.11	3.2	17.90	17.83
60%	108	0.1	35	76	16	34	-0.8	102	0.2	2	11	0.08	0.11	3.5	15.53	16.40
65%	107	0.3	35	75	15	34	-0.7	101	0.2	2	10	0.07	0.09	3.7	13.97	14.96
70%	107	0.5	33	73	15	32	-0.7	101	0.1	1	9	0.05	0.08	4.0	12.45	13.24
75%	106	0.8	32	71	14	32	-0.6	101	0.1	1	7	0.03	0.08	4.3	10.85	12.06
80%	106	1.1	31	68	14	31	-0.5	100	0.1	0	6	0.00	0.07	4.8	8.53	10.57
85%	105	1.4	29	65	13	30	-0.4	100	0.0	0	5	-0.02	0.06	5.4	6.10	8.93
90%	104	1.9	26	63	12	28	-0.2	99	-0.1	-1	3	-0.07	0.05	5.9	3.08	6.26
95%	103	2.4	24	58	10	26	0.1	98	-0.2	-2	1	-0.10	0.02	7.3	-1.85	2.94

CE = Calving Ease Direct
 BW = Birth Weight
 WW = Weaning Weight
 YW = Yearling Weight
 MK = Milk
 TM = Total Maternal
 GL = Gestation Length
 CED = Calving Ease Daughters

SC = Scrotal Circumference
 ST = Stayability
 CW = Carcass Weight
 RE = Ribeye Area
 MB = Marbling
 DtF = Days to Finish
 CV = Carcass Value
 FM = Feedlot Merit

Keep in mind that all EPDs are across the entire Gelbvieh breed. So, when we say a bull is in the top 30%, 10%, or top 1%, that is compared to the entire Gelbvieh breed.





Lynn's Musings



Subject: \$EN on Angus Bulls

\$EN is a value in dollars to assess the differences between different sires' daughters energy requirements. Some thoughts about \$EN...I hear rumblings of people starting to chase \$EN like some have frame scores, milk, carcass, etc. in the past.

The sires we have this year range from Final Answer +8.69 to Hoover Dam's -18.58 (Hoover Dam has started to improve as daughters come into production). My thinking for our area is that we need to be in a range from around -15 to +15. It looks like to me, a cow with a -20 or lower number will be too big with too much milk, etc. (more opens and cost too much to keep). On the other hand, a cow with a +20 number or higher is not productive enough in terms of pounds of calf produced. IE...lower weaning weights, lower gains, carcass weights too small, etc. This is just my "musings". I would be interested to know your thoughts on it.



13



14



62



71

Subject: Different % of A+PLUSBalancer bulls

Our A+PLUSBalancer bulls range from 3% to 50% Gelbvieh. Don't make percentage your determining criteria for picking a bull. There are way too many other factors that affect what a bull is worth in your operation. Take for example, lots 13 and 14. Both are top-notch Final Answer sons with very similar performance and EPDs even though one is a 50% and the other 13%. Another example, lot 62 is an awesome 3% Protege' son compared to lot 71, an outstanding 25% War Party son. Even though there is a wide range of percentages, all four of these bulls have good calving ease, great performance, outstanding EPDs and eye appeal. Good cattle are good cattle!! This is just my "musings". I would be interested to know your thoughts on it.



Spring Valley Building Better Beef



SPECIAL DRAWING SALE DAY

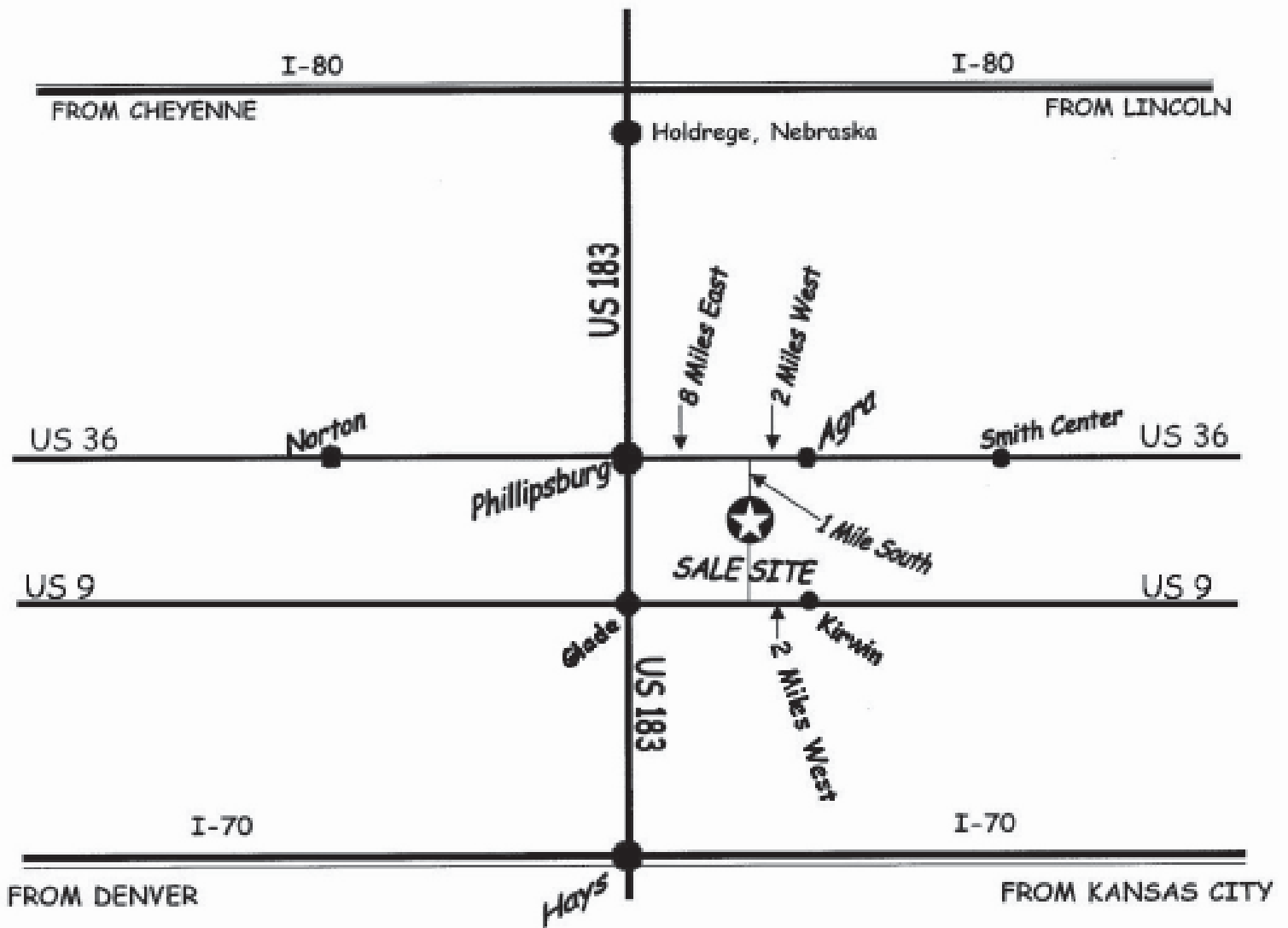
We will hold a drawing on sale day before the auction begins for two \$300 certificates that will be good during the auction on a bull that you are the winning bidder on. You have to be registered to bid and be at the auction to win.

VOLUME DISCOUNT

\$100 Discount off third bull purchased and \$100 off each additional bull.



DIRECTIONS TO THE SALE SITE



Following the road to the calving pasture

SPRING VALLEY

878 E. Santa Fe Rd
Agra, KS 67621

**Performance
Bull Sale**

Wednesday, MARCH 7, 2012
1:00 P.M.
at Spring Valley
Agra, KS

**SELLING
ANGUS BULLS
A+PLUSBALANCER BULLS**